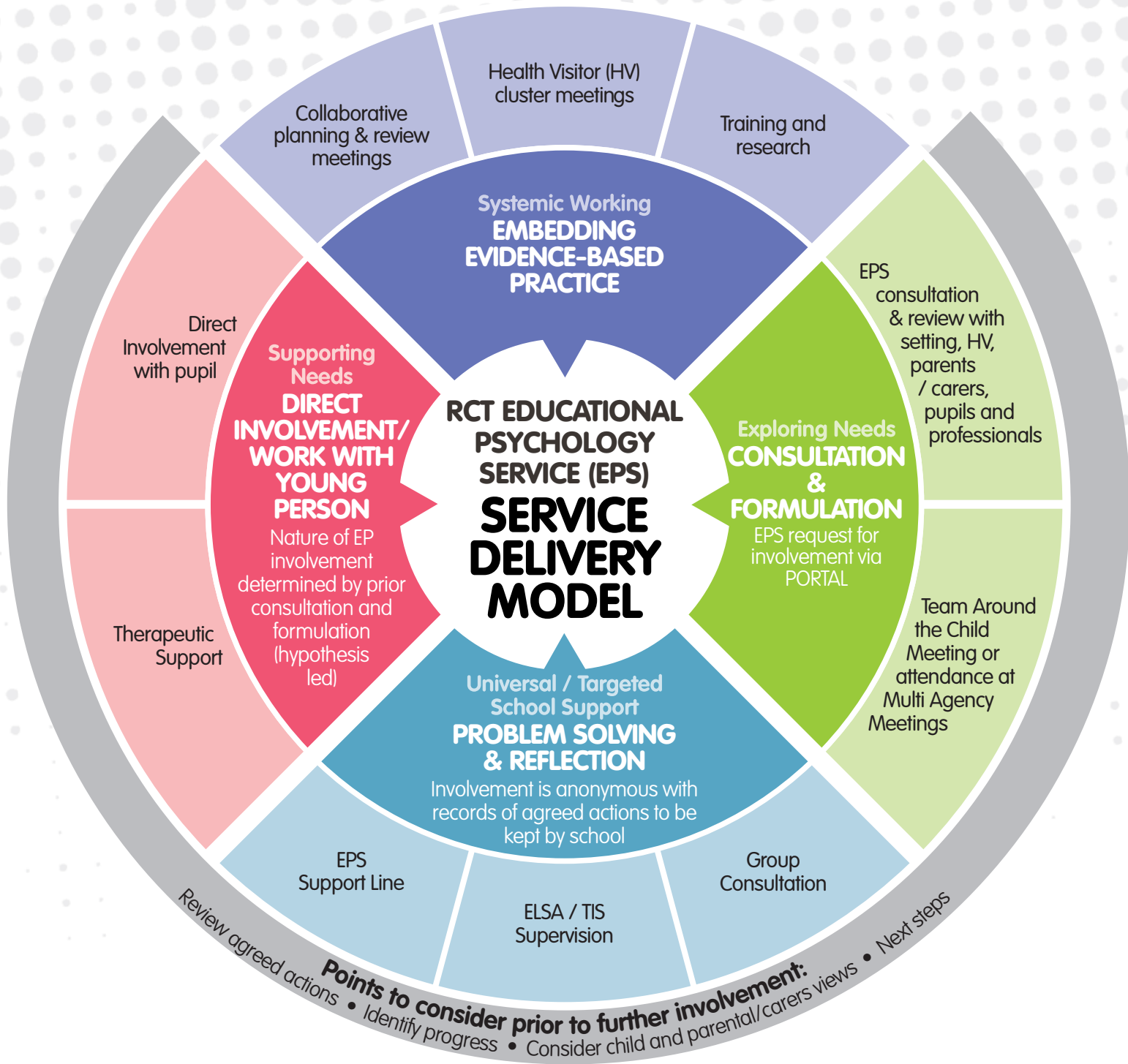




Educational Psychologists work closely with others to bring about positive change(s) for key adults, pupils, families.

All involvement will hold the child's/young persons (CYP) views at the centre of discussion/actions. Listening carefully using consultation including all key people, areas of strength and need can be identified and a plan to support is formulated. We aim to promote equal opportunities and inclusion for all children and young people and reject discrimination in all forms.



Valleys Innovation Centre, Abercynon, CF45 4SN
 EPS@rctcbc.gov.uk
www.rctcbc.gov.uk/AccessandInclusiontoEducation

