

Allwedd / Key

Llywyr graean di-goncrit presennol		Existing unbound / bound gravel path
Llywyr a rennir arfaethedig wedi'i adeiladu gyda phalmetydd hydraidd		Proposed shared route constructed with permeable paving
Llywyr a rennir arfaethedig wedi'i adeiladu gyda phalmetydd asffalt		Proposed shared route constructed with asphalt paving
Yrnylon ac arglwydd arfaethedig - cyfeirir at nodyn 4		Proposed verge and embankment - refer to note 4
Postyn pren 1.4 metr o uchder a ffens pedair rheilen arfaethedig		Proposed 1.4m high timber post and four rail fence
Mainc bwrpasol yn adlewyrchu treftadaeth leol		Bespoke bench reflecting local heritage

Nodiadau

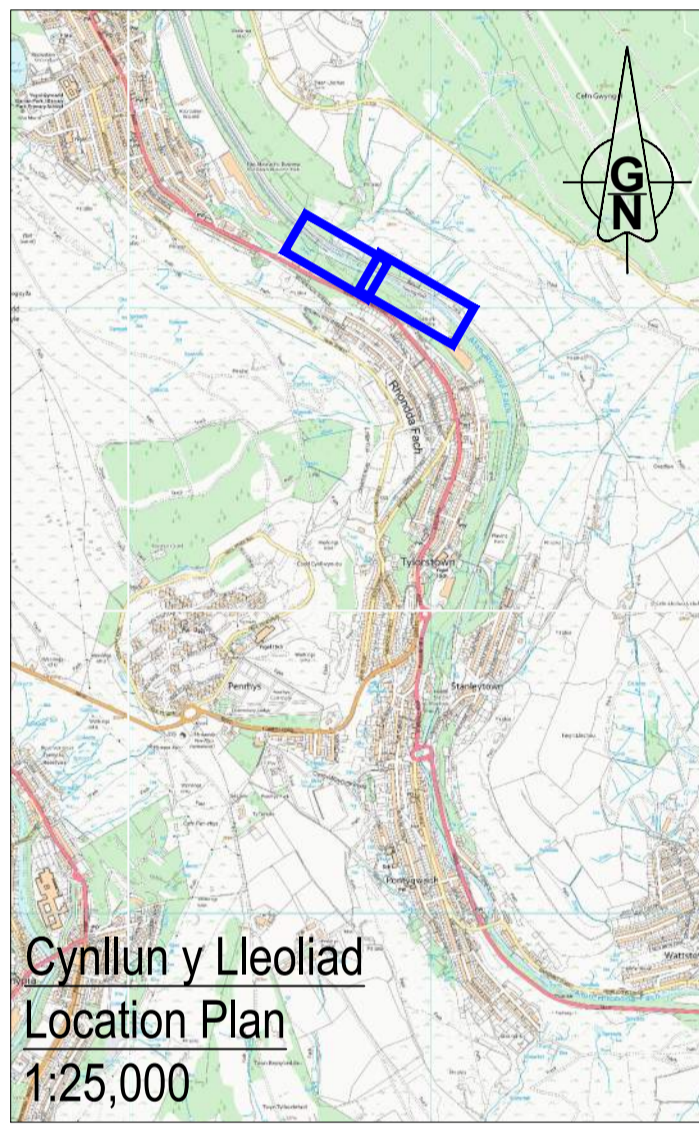
- Am fanylion y trawsuniau, cyfeirir at luniad P187-S5-71-05.
- Ar gyfer arwynebau hydraidd a manylion adeiladu'r ddrain asgell (fin drain), cyfeirir at lun P187-S5-71-07.
- Am fanylion am y draeniad cyfeirir at luniadau P187-S5-71-06 i P187-S5-71-09.
- Lle bo'n bosibl, bydd uwchbridd yn cael ei gadw ar y safle i gadw'r banc hadau gyda'r llystyfiant yn cael ailgyfyng yn dilyn y gwaith.

Notes

- For section details refer to drawing P187-S5-71-05.
- For permeable surfacing and fin drain construction details refer to drawing P187-S5-71-07.
- For drainage details refer to drawings P187-S5-71-06 to P187-S5-71-09.
- Where possible topsoil will be kept on site to preserve the seedbank with vegetation allowed to regenerate following the works.

© Hysfwrdd y Goron (a hawliau'r gronfa ddata) 2024 OS AC000811047. Mae hawli gyda chi i ddefnyddio'r data yma dim ond at ddibenion ymatedd i'r sefylliad sy'n rhoi'r data i chi, neu at ddibenion ogythru ag ef. Does dim hawli gyda chi i gopïo neu sicrhwyddio'r data yma ar unrhydd parhau, neu'i ddiarbarthu neu'i werthu iddyn chi.

© Crown copyright (and database right) 2024 OS AC000811047. You are permitted to use this data solely to enable you to respond to, or interact with, the organisation that provided you with the data. You are not permitted to copy, sub-licence, distribute or sell any of this data to third parties in any form.



Manylion Adolygiad/Revision Details

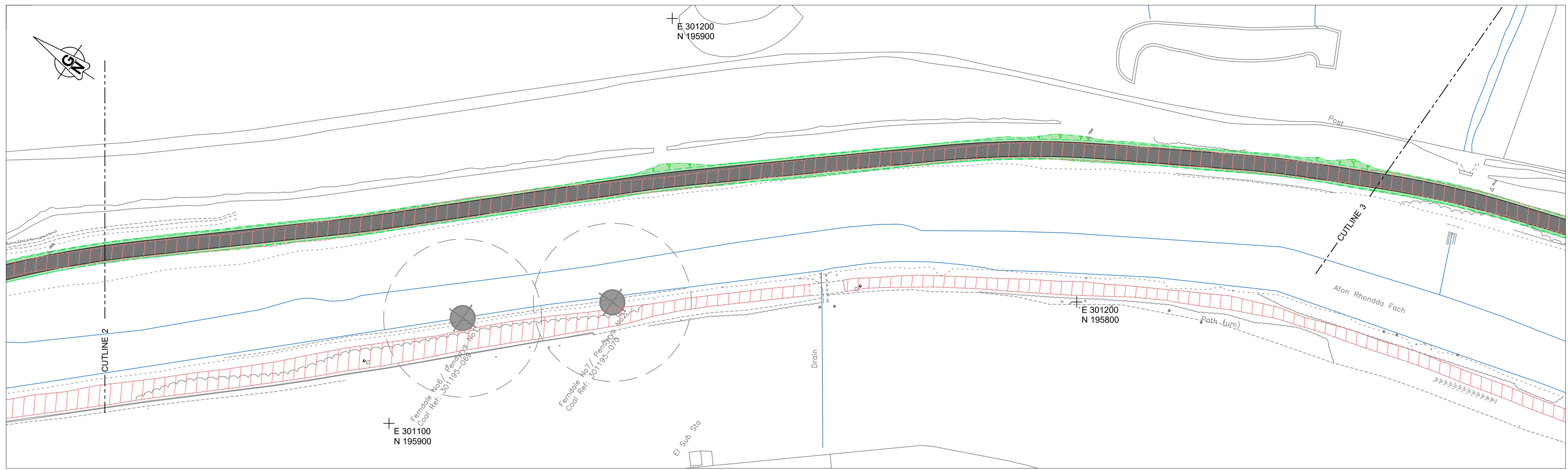
Project/Project	GenBy	Dyddiad/Date	Adolygiad/Revision
Llywyr Teithio Llesol Rhondda Fach Luniadau Cynllunio Cam 5			
Rhondda Fach Active Travel Route Phase 5 Planning Drawings			
Tafll y Llywyr Dwg Title			
Cynllun Cyffredinol (Taflen 1 o 3)			
General Arrangement (Sheet 1 of 3)			
Rif y Project/Project No.	Graddfa/Scale @ A1	Dyddiad/Date	
P187	1:500	08/24	
Tafll y Llywyr Dwg No.	Adolygiad/Revision		
P187-S5-71-02	P00		
Paratowyd gan/Prepared by:	Gwilym/gan/Checked by:	Cymradwyd/gan/Approved by:	
JS	RG	RG	

RHONDDA CYNON TAF
RHONDDA CYNON TAF
PRIFYRDD, GOFAL Y STRYDOEDD
A THRAFNDIAETH

RHONDDA CYNON TAF
HIGHWAYS, STREETCARE AND
TRANSPORTATION

PROSIECTAU STRATEGOL/STRATEGIC PROJECTS
Llywyr 2/Floor 2, 2 Llys Cadwyn, Pontypridd, CF37 4TH
Ffôn/Tel: 01443 425001 Ffacs/Fax: 01443 430414

Print Date: 15/08/2024 10:26:40



Allwedd / Key

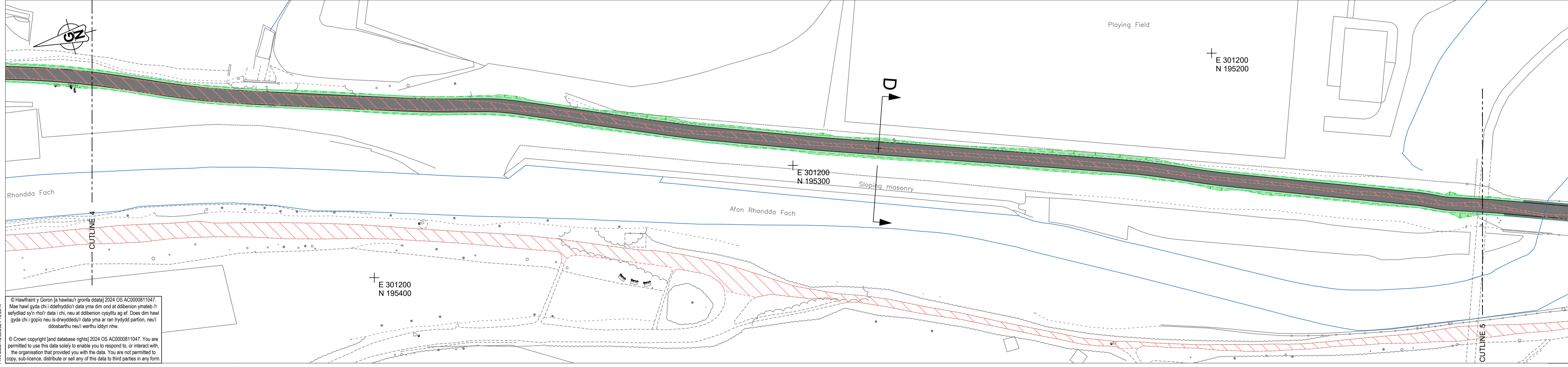
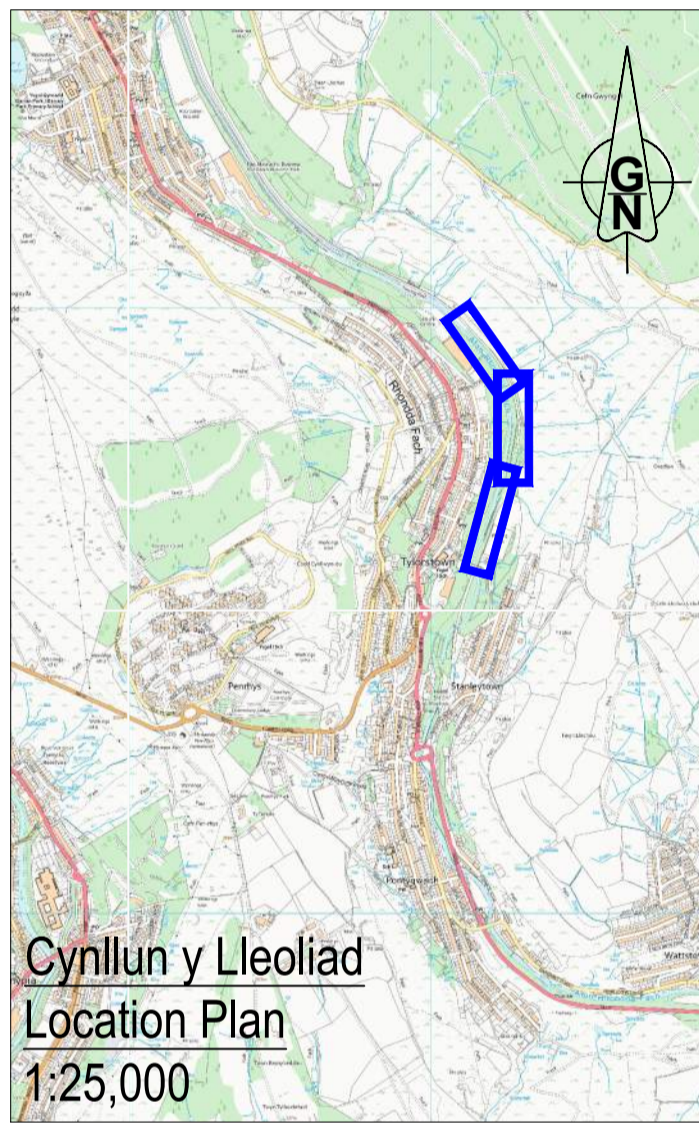
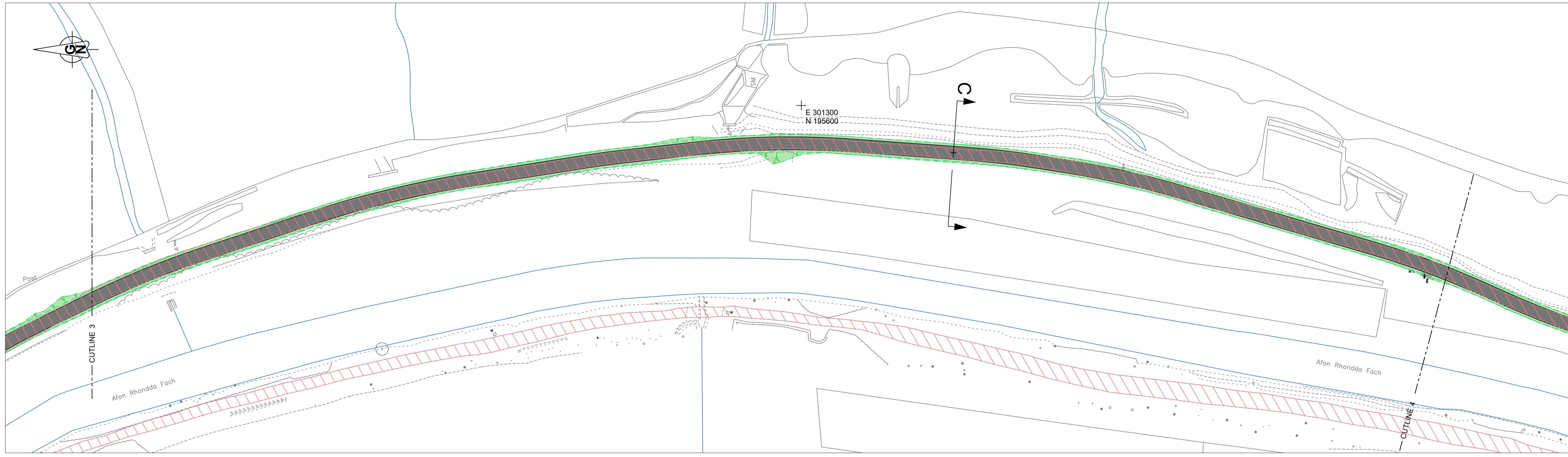
Lwybr graean di-goncrit presennol		Existing unbound / bound gravel path
Lwybr a rennir arfaethed wedi'i adeiladu gyda phalmentydd hydraidd		Proposed shared route constructed with permeable paving
Lwybr a rennir arfaethed wedi'i adeiladu gyda phalmentydd asfalt		Proposed shared route constructed with asphalt paving
Yrnylon ac arglwydd arfaethed - cyfeirir at nodyn 4		Proposed verge and embankment - refer to note 4
Postyn pren 1.4 metr o uchder a ffens pedair rheilen arfaethed		Proposed 1.4m high timber post and four rail fence
Mainc bwrpasol yn adlewyrchu treftadaeth leol		Bespoke bench reflecting local heritage

Nodiadau

- Am fanylion y trawsuniau, cyfeirir at luniad P187-S5-71-05.
- Ar gyfer arwynebau hydraidd a manylion adeiladu'r ddaen asgell (fin drain), cyfeirir at lun P187-S5-71-07.
- Am fanylion am y draeniad cyfeirir at luniadau P187-S5-71-06 i P187-S5-71-09.
- Lie bo'n bosibl, bydd uwchbridd yn cael ei gadw ar y safle i gadw'r banc hadau gyda'r llystyfiant yn cael ailgyfu yn dilyn y gwaith.

Notes

- For section details refer to drawing P187-S5-71-05.
- For permeable surfacing and fin drain construction details refer to drawing P187-S5-71-07.
- For drainage details refer to drawings P187-S5-71-06 to P187-S5-71-09.
- Where possible topsoil will be kept on site to preserve the seedbank with vegetation allowed to regenerate following the works.



Project/Project
Llwybr Teithio Llesol Rhondda Fach
Luniadau Cynllunio Cam 5

**Rhondda Fach Active Travel Route
Phase 5 Planning Drawings**

**Cynllun Cyffredinol
(Taflen 2 o 3)**

**General Arrangement
(Sheet 2 of 3)**

Rif y Project/Project No. P187	Graddfa/Scale @ A1 1:500	Dyddiad/Date 08/24
Tafll y Luniad/Draw No. P187-S5-71-03	Awdygiad/Revision P00	
Paratowyd gan/Prepared by: JS	Gwirydwyd gan/Checked by: RG	Cymeradwydwyd gan/Approved by: RG

RHONDDA CYNON TAF
PRIFYRD, GOFAL Y STRYDOEDD
A THRAFNDIAETH

RHONDDA CYNON TAF
HIGHWAYS, STREETCARE AND
TRANSPORTATION

PROSIECTAU STRATEGOL/STRATEGIC PROJECTS
Llawr 2/Floor 2, 2 Llys Cadwyn, Pontypridd, CF37 4TH
Ffôn/Tel: 01443 425001 Ffacs/Fax: 01443 430414

© Crown copyright (and database right) 2024 OS AC0000811047. You are permitted to use this data solely to enable you to respond to, or interact with, the organisation that provided you with the data. You are not permitted to copy, sub-licence, distribute or sell any of this data to third parties in any form.



Allwedd / Key

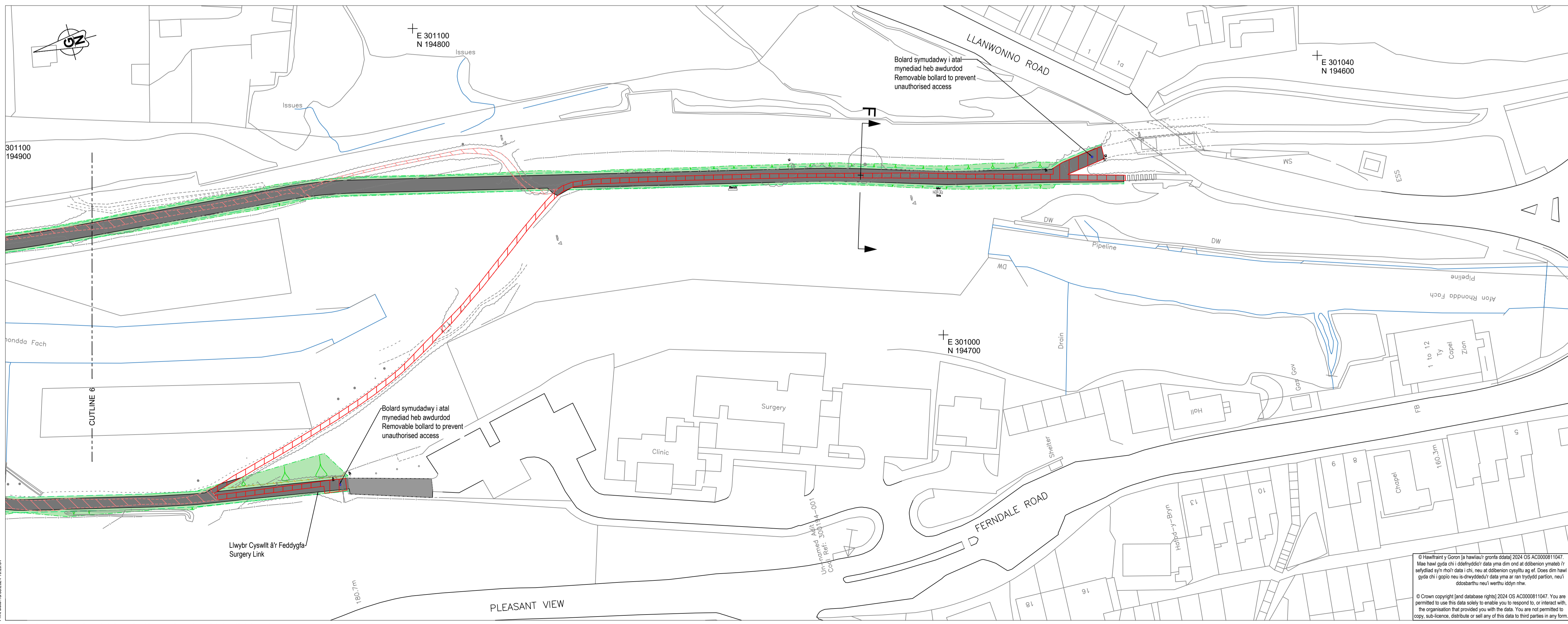
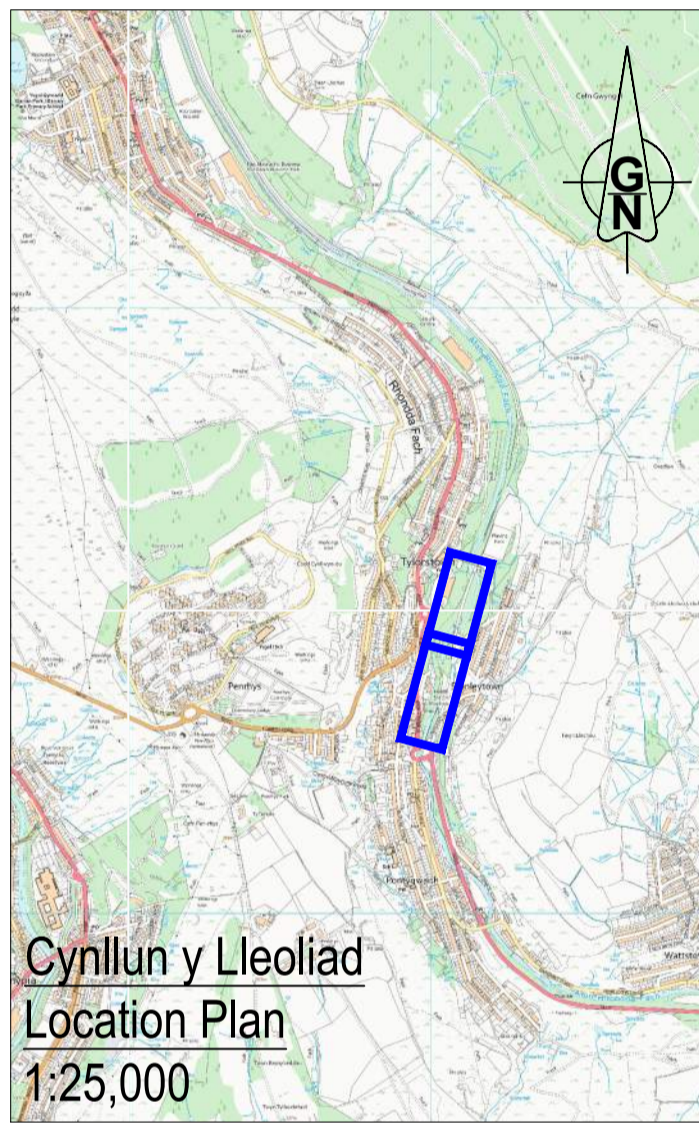
- Llwybr graean di-goncrit presennol
- Llwybr a rennir arfaethedig wedi'i adeiladu gyda phalmentydd hydraiddd
- Llwybr a rennir arfaethedig wedi'i adeiladu gyda phalmentydd asffalt
- Yrnylon ac arglawdd arfaethedig - cyfeirwch at nodyn 4
- Postyn pren 1.4 metr o uchder a ffens pedair rheilen arfaethedig
- Mainc bwrpasol yn adlewyrchu treftadaeth leol
- Existing unbound / bound gravel path
- Proposed shared route constructed with permeable paving
- Proposed shared route constructed with asphalt paving
- Proposed verge and embankment - refer to note 4
- Proposed 1.4m high timber post and four rail fence
- Bespoke bench reflecting local heritage

Nodiadau

- Am fanylion y trawsuniau, cyfeirwch at luniad P187-S5-71-05.
- Ar gyfer arwynebau hydraiddd a manylion adeiladu'r ddrain asgell (fin drain), cyfeirwch at lun P187-S5-71-07.
- Am fanylion am y draeniad cyfeirwch at luniadau P187-S5-71-06 i P187-S5-71-09.
- Lle bo'n bosibl, bydd uwchbridd yn cael ei gadw ar y safle i gadw'r banc hadau gyda'r llystyfiant yn cael ailfytu yn dilyn y gwaith.

Notes

- For section details refer to drawing P187-S5-71-05.
- For permeable surfacing and fin drain construction details refer to drawing P187-S5-71-07.
- For drainage details refer to drawings P187-S5-71-06 to P187-S5-71-09.
- Where possible topsoil will be kept on site to preserve the seedbank with vegetation allowed to regenerate following the works.



**Cynllun y Lleoliad
Location Plan
1:25,000**

Manylion Adolygiad/Revision Details

Project/Project	GenBy	Dyddiad/Date	Adolygiad/Revision
Llwybr Teithio Llesol Rhondda Fach Luniadau Cynllunio Cam 5			
Rhondda Fach Active Travel Route Phase 5 Planning Drawings			
Tafll y Luni Dwg Title			
Cynllun Cyffredinol (Taflen 3 o 3)			
General Arrangement (Sheet 3 of 3)			
Rif y Proiect/Project No. P187	Graddfa/Scale @ A1 1:500	Dyddiad/Date 08/24	Adolygiad/Revision P00
Tafll y Luni Dwg No. P187-S5-71-05	Geniwyd gan/Checked by RG	Cymeradwyd gan/Approved by RG	
Paratowyd gan/Prepared by JS			

© Crown copyright (and database rights) 2024 OS AC0000811047. You are permitted to use this data solely to enable you to respond to, or interact with, the organisation that provided you with the data. You are not permitted to copy, sub-licence, distribute or sell any of this data to third parties in any form.

RHONDDA CYNON TAF
PRIFYRDOD, GOFAL Y STRYDOEDD
A THRAFNDIAETH

RHONDDA CYNON TAF
HIGHWAYS, STREETCARE AND
TRANSPORTATION

PROSIECTAU STRATEGOL/STRATEGIC PROJECTS
Llwybr 2/Floor 2, 2 Llys Cadwyn, Pontypridd, CF37 4TH
Ffôn/Tel: 01443 425001 Ffacs/Fax: 01443 430414