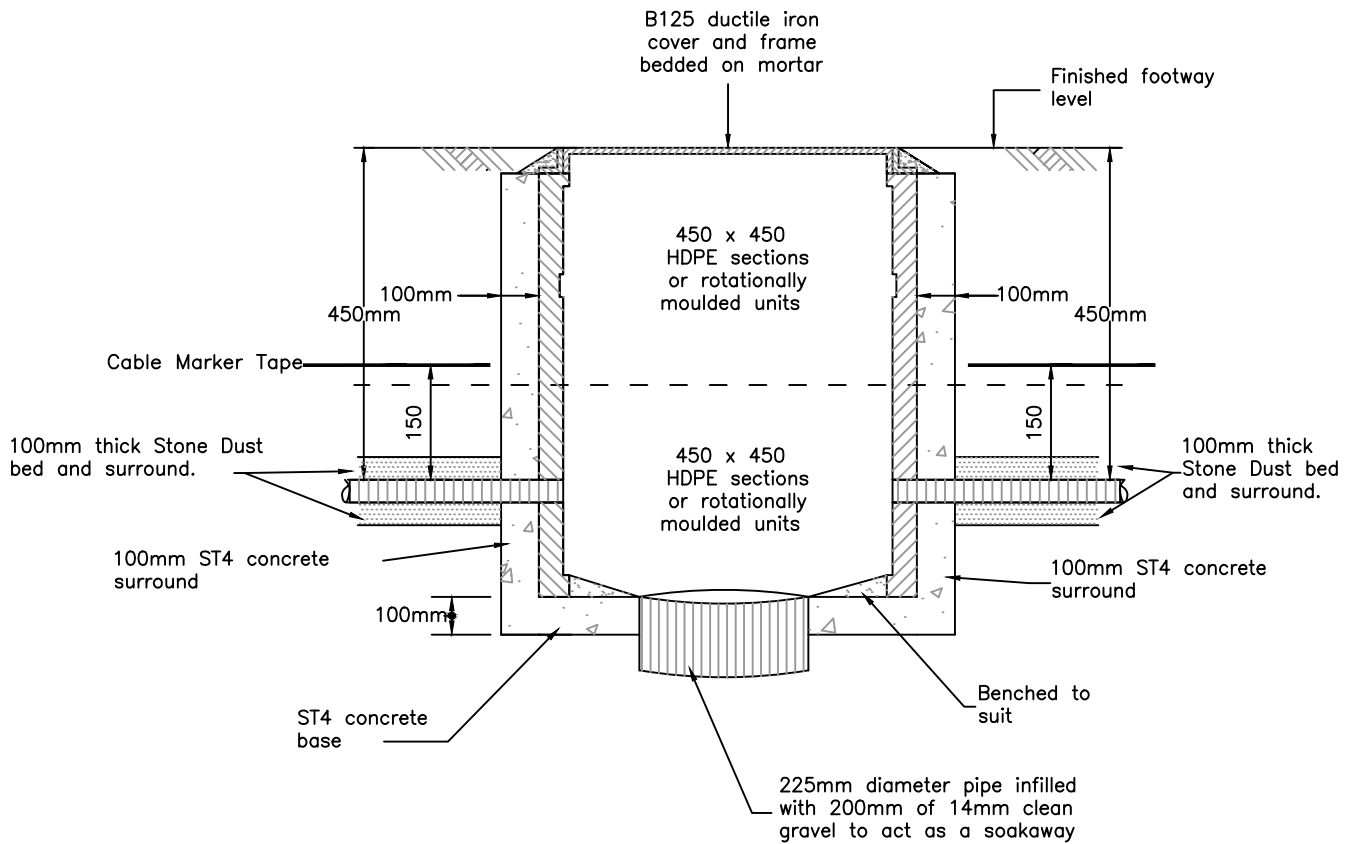


Rev.	Amendments	Date	Made By	Chk'd By



NOTES

1. Generally two access chamber sections will give a duct cover depth of 450mm, please see particular Manufactures details to confirm the number of access chambers required.
2. A yellow warning tape inscribed "Caution – Street Lighting Cables Below" is to installed 150mm above the top of the service ducts after partially backfilling the trench.

ACCESS CHAMBER – STREET LIGHTING DUCT IN FOOTWAY

HIGHWAY DESIGN GUIDE STANDARD DETAILS

RHONDDA CYNON TAF
COUNTY BOROUGH COUNCIL



Drawn	CLF
Checked	RMD
Date	Jan 14
Scale	NTS
Drg. No.	317
Rev.	