

THE NATIONAL LIDO OF WALES, LIDO PONTY

LIDO LEARNING

EDUCATIONAL PACK



RHONDDA CYNON TAF



WATER WORKS

TEACHER'S PACK



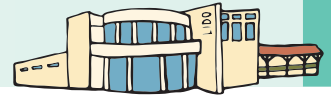
LOTTERY FUNDED
ARIENNIR GAN Y LOTERI



Llywodraeth Cymru
Welsh Government

Ewrop & Cymru: Buddsoddi yn eich dyfodol
Cronfa Datblygu Rhanbarthol Ewrop
Europe & Wales: Investing in your future
European Regional Development Fund

WATER WORKS INTRODUCTION



The aim of this pack is to help teachers approach a self led visit to the National Lido of Wales, Lido Ponty, in a creative, confident and imaginative way. The activity suggestions are flexible and we encourage teachers to select and adapt the material to ensure that it meets topic and year group needs.

Booking a visit

To book your free visit, please follow these simple steps:

- Book your visit at least five working days in advance.
- Telephone on **0300 004 0000** to check the availability for the date on which you would like to visit.
- Once you have agreed a date and time with the National Lido of Wales, Lido Ponty, complete and return the online booking form that will be emailed to you.

Activities are timed to last approximately ninety minutes and may be preceded or followed by a key skills session and a swim (in summer term only) or a visit to our adventure playground, Lido Play, which is open all year round.

Health and Safety

Teachers and group leaders are responsible for carrying out risk assessments prior to the visit, in accordance with guidance issued by local education authorities. The learning pages on the National Lido of Wales, Lido Ponty website offer specific advice for planning your visit and site information is available on request.

The National Lido of Wales, Lido Ponty and the Curriculum

For each activity we have included a curriculum map to support teachers' planning. The map highlights how the activities in this pack are relevant to learning outcomes in Key Stage 2 and how they link to the National Curriculum for Wales. The activity programme has been designed with Key Stage 2 in mind, but you will find content relevant to Key Stage 1 and the Foundation Phase, and activities are adaptable.

Before your visit

- Discuss what the children expect to find when they get to the National Lido of Wales, Lido Ponty.
- Ask the children if any of them have been to the National Lido of Wales, Lido Ponty before, and if so, what did they do there?
- Make a tally chart of each activity and show the children how to create a bar chart using the information.

YOU WILL NEED TO BRING

Pencils or felt tip pens

Tracing Paper

Calculators



The National Lido of Wales, Lido Ponty, is the only operational open air swimming pool remaining in Wales. Together with Ynysangharad War Memorial Park, the National Lido of Wales, Lido Ponty is an iconic example of interwar municipal provision for public recreation. A visit will support the development of historical skills and enquiry at all key stages.

History

The National Lido of Wales, Lido Ponty originally opened on 30 July 1927. It was the first purpose-built swimming pool in Pontypridd and was designed by W. E. Lowe. Run by Pontypridd Urban District Council, it was largely financed by the Miner's Welfare Fund. This Fund was formed by a tax on the profits of the coal industry which was then put to use improving the social and educational opportunities of mining communities.

Before the Lido was built, people swam and bathed in the nearby rivers, such as the Taff or the Rhondda, or in the Glamorganshire Canal but these were heavily polluted by industry and not a safe environment for people to swim in. In fact, several young people died because of swimming in dirty rivers and demand grew for purpose built swimming pools instead.

After the Second World War, the National Lido of Wales, Lido Ponty was used by Jenny James when she was training for her cross-channel swims. On 16 August 1951, she swam from France to England in a time of 13 hours, 55 minutes the first Welsh person ever to do so.

In 2015, the newly restored Lido reopened. Many original features were rescued, including the turnstiles and ticket office.



Looking at the Lido

The Lido was originally built in an arts and crafts style. This can be seen in the oldest parts of the building near the front entrance. Additions in the 1930s adopted an art deco style, which can be seen in the ticket office and store room doors, for instance. Other features include the crenellated outer wall and the red roof tiles that convey a Mediterranean look. The tiles were inspired by the Romans and reflected the craze in the mid 1920s for Roman history that followed the discoveries at Caerleon.

The entrance hall would still be fairly familiar to the original visitors. At first, there were two doors onto pool side, with eager swimmers entering through the turnstiles. These were made in Manchester and Salford in the north of England. To the left hand side, as you enter, would have been the manager's office. In those days he was called the baths attendant.

The changing boxes that run along the outside of the pool were an original feature and are similar to changing boxes that you still find at the beach. When the Lido first opened, you could even hire towels and woollen bathing costumes! These were washed at the Lido's own laundry.

The original size of the pool is marked by the white line. At nearly fifty metres long and thirty five metres wide, the National Lido of Wales, Lido Ponty was the largest open air swimming pool in the South Wales Coalfield.

Have you been to the Roman baths at Caerleon? How do they compare?

Photograph stored in the resource kit at the Lido.

WATER WORKS ACTIVITY ONE CLASS ROOM



CURRICULUM MAP

- **Mathematics Skills:** Solve mathematical problems, communicate mathematically **Range:** Measurements
 - **History Skills:** Historical knowledge and understanding historical enquiry.
 - **Science Skills:** Scientific information, scientific enquiry.
- Other Curriculum Links** English: Oracy

FILLING THE LIDO

Although the National Lido of Wales, Lido Ponty remains full all year round these days, when it originally opened it was emptied and filled at the beginning of the swimming season.

More than 450,000 gallons of water were used (more than two million litres). Working in groups (as necessary), use the white line that runs around the outside of the pool to estimate its original length and width.

The deep end of the Lido was 7ft (2.1 metres) and the shallow end was 3ft (90cm).

Remember: you can estimate distance using steps. Approximately three steps is equivalent to one metre.

Teachers and group leaders please note that access to the poolside is difficult during the summer season. This activity can also be done as an exercise comparing the modern pool to the white line by scale and making estimates based on the differences.

In early June 1939, a fire broke out on the spectator's terrace behind the diving platforms destroying the original wooden diving facilities and much of the seating area.



Reflect

Look at the modern swimming pools at the National Lido of Wales, Lido Ponty.

What is different about them?

Are they smaller than the original lido?

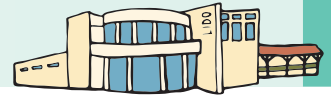
Are they likely to be shallower?

Originally, the National Lido of Wales, Lido Ponty had a waterslide and diving platforms, why doesn't it have these any more?

When you are near water, remember to be **SAFE**

- SPOT** the dangers keep a look out.
- ASK** the lifeguards for advice and listen.
- FRIEND** - take someone with you.
- EMERGENCY** - dial 999 and shout for help.

WATER WORKS ACTIVITY TWO CLASS ROOM

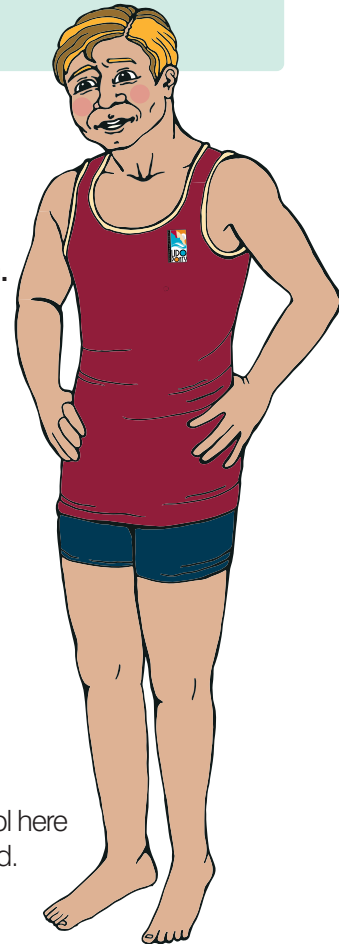


CURRICULUM MAP

- **Mathematics Skills:** Solve mathematical problems, communicate mathematically **Range:** Measurements
 - **History Skills:** Historical knowledge and understanding historical enquiry.
 - **Science Skills:** Scientific information, scientific enquiry.
- Other Curriculum Links** English: Oracy

EMPTY POOL

Oh no! Dai, the lifeguard at the National Lido of Wales, Lido Ponty, has accidentally pulled the plug out of one of the pools and emptied all the water. He needs to know how much water it will take to fill it back up again. **Can you help him?**



To measure the volume of the pool we need to know three things: **length, width, depth.**

With these measurements we can use this formula to find out the volume of water that we need to fill the National Lido of Wales, Lido Ponty back up again:

$$\text{Length} \times \text{Width} \times \text{Height} = \text{Volume}$$

Help Dai fill up the National Lido of Wales, Lido Ponty. He has measured the pool, it is:

25 metres long • 10 metres wide • 1.5 metres deep

Note to teachers: the activity pool at the National Lido of Wales, Lido Ponty is 25 metres long, 10 metres wide, and 1.5 metres deep.

Working in groups, use these measurements to calculate the volume of the activity pool here at the National Lido of Wales, Lido Ponty and let Dai know how much water he will need.

Develop

Let Dai know what the volume of the National Lido of Wales, Lido Ponty is.

Remember: $\text{Volume} = \text{Length} \times \text{Width} \times \text{Depth}$

Dai now knows how much water he needs, but the water company wants to know how much water he will use expressed in litres. This means he has to change his measurement, which he wrote in cubic metres, into litres. This is called conversion.

Can you help Dai do the conversion?

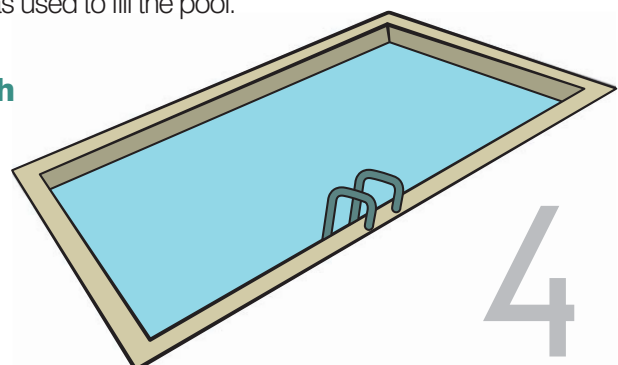
Remember that one cubic metre (m³) equals 1,000 litres. So to find out how many litres we need to multiply our first measurement by 1,000.

Finally, Dai has to pay the water company for the water he has used to fill the pool. He is charged **£1** for every **500 litres** he uses.

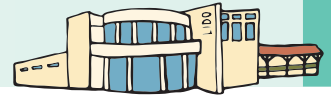
Working in groups, can you work out how much his water bill is going to be?

PHEW!

Dai has filled the pool. Thank you!



WATER WORKS ACTIVITY THREE CLASS ROOM



CURRICULUM MAP

- **Mathematics Skills:** Solve mathematical problems, communicate mathematically **Range:** Measurements
 - **History Skills:** Historical knowledge and understanding historical enquiry.
- Other Curriculum Links** English: Oracy

JENNY'S SWIM

Jenny James, from Pontypridd, was the first Welsh person to swim across the English Channel from France to England. It is twenty one miles or about thirty three kilometres.

She did this in 1951. Jenny James trained for her swim in the National Lido of Wales, Lido Ponty. In those days the pool measured 45 metres long.

How many lengths would it have taken for her to swim the equivalent distance between France and England?

In 1949, a couple of years before her cross-channel swim, Jenny James swam the Bristol Channel between Weston Super Mare and Penarth. The distance between those two points is 12 miles or about 19 kilometres.

How many lengths of the National Lido of Wales, Lido Ponty would this have taken Jenny James to swim?

You may have to round up.

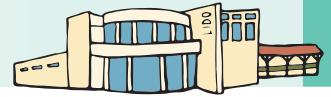
Jenny James crossed the Bristol Channel in 10 hours.

Can you help her work out her speed?

Speed = Distance ÷ Time



WATER WORKS ACTIVITY FOUR LIDO



BEING A LIFEGUARD

Lifeguards keep us safe at swimming pools and can be identified by their red uniforms. They are trained to rescue people from the water and to perform first aid if we are injured.

Let's learn some of their skills!

TOWING AND PULLING

Have you ever noticed that lifeguards carry a float with them? This can be used to tow people to safety in the swimming pool. We are going to investigate how this works and have a go ourselves.

Work in pairs: One of you is going to pretend to be the casualty, the other the lifeguard. Listen carefully to the instructions you are given by the Lido staff and have a go yourselves.

FIRST AID

Basic first aid is an essential skill and is something that all lifeguards are trained to administer. We need to know what to do in an emergency. Listen carefully to the instructions you are given by the Lido staff and have a go yourselves. Don't forget that you've met DR ABC!



Teachers and group leaders please note:

This is an optional addition to your visit and needs to be booked with Lido staff in advance.

Please indicate whether you would like to add this session to your itinerary when booking in with us.