

© Hawlfraint y Goron [a hawliau cronfa ddata] 2019 OS LA100023458. Rhoddir trwyddedid ddirymiadwy, anghyfyngedig a heb freindal i chi i weld y data trwyddedid at ddibenion arfasnachol am y cyfnod y mae ar gael gan RCT. Ni cheich gopio, is-drwyddedu, dosbarthu na gwerthu unrhyw ran o'r data hwn i ddiwydd partion mewn unrhyw ffurf.

© Crown copyright [and database rights] 2019 OS LA100023458. You are permitted to use this data solely to enable you to respond to, or interact with, the organisation that provided you with the data. You are not permitted to copy, sub-licence, distribute or sell any of this data to third parties in any form.

### ALLWEDD

	GWAHARDDIAD ARBROFOL ARFAETHEDIG AR GERBYDAU MODUR AR DDECHRAU A DIWEDD DIWRNOD YSGOL, A TERFYN O 20MYA
	TERFYN CYFLYMDER 20 MYA ARBROFOL ARFAETHEDIG
	GWAHARDDIAD ARFAETHEDIG O ARWYDDION GERBYDAU MODUR
	ARWYDDION ARFAETHEDIG 20 MYA



**RHONDDA CYNON TAF**  
FFYNIANT, DATBLYGU, A GWASANAETHAU RHENG-FLAEN

RHONDDA CYNON TAF  
PROSPERITY, DEVELOPMENT AND FRONTLINE SERVICES

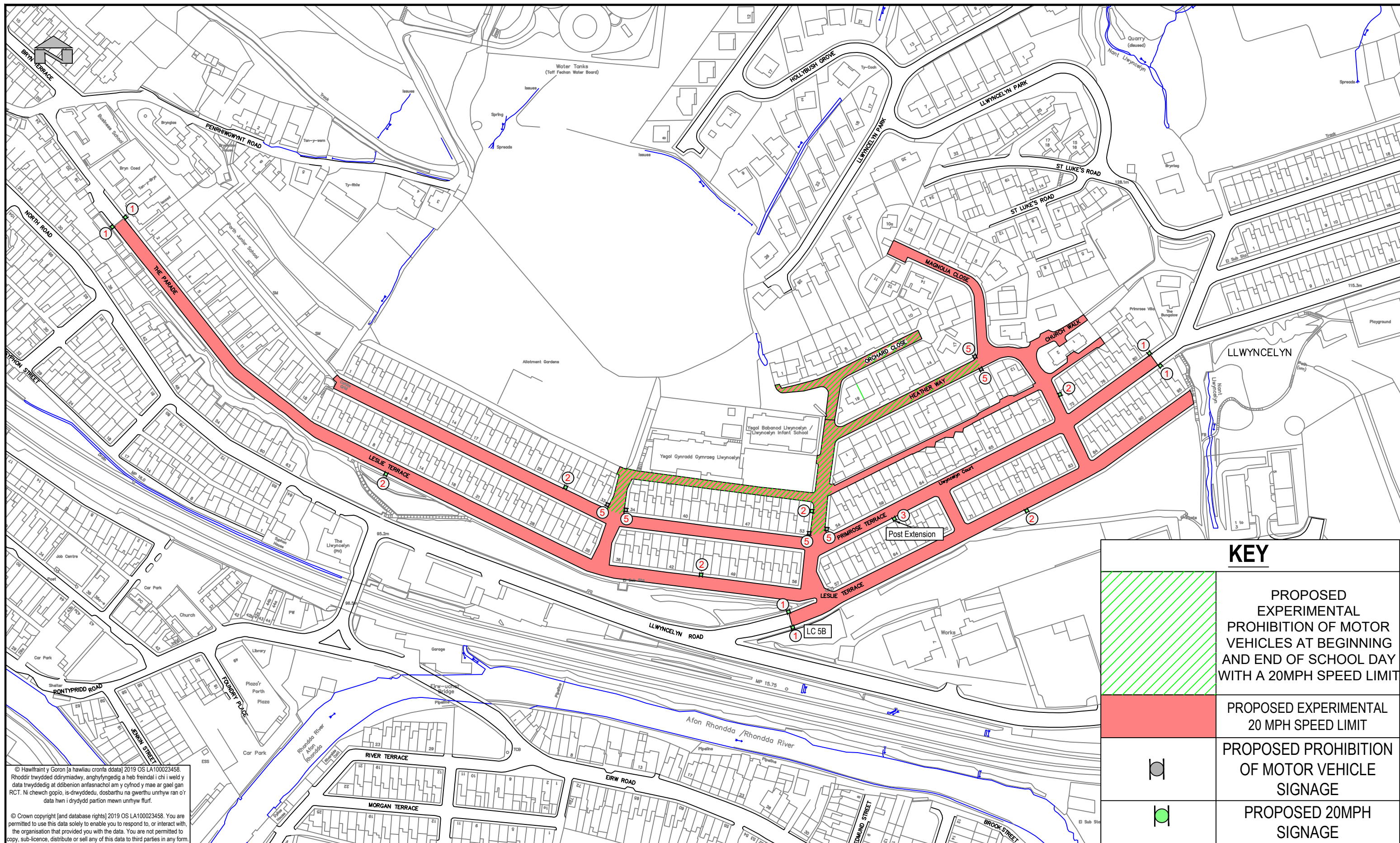
**UNED RHEOLI TRAFFIG / TRAFFIC MANAGEMENT**  
Ty Sardis/Sardis House, Heol Sardis/Sardis Road, Pontypridd, CF37 1DU  
Ffôn/Tel: 01443 425001 Ffacs/Fax: 01443 490414

Cleint/ Client	CBS Rhondda Cynon Taf   Rhondda Cynon Taf CBC
Prosiect/ Project	MESURAU TRAFNIDIAETH GYNALIADWY LLEOL

Teitl y Llun/ Dwg Title	GWAHARDDIAD ARBROFOL ARFAETHEDIG O GERBYDAU MODUR A THERFYN CYFLYMDER 20 MYA PARHAOL Ysgol Gynradd Gymraeg Llwyncelyn
-------------------------	--

Manylion Adolygiad/Revision Details		
Rhif y Prosiect/ Project No.	Graddfa/ Scale @ A3	Dyddiad/ Date
IF186-8	1:2,000	Aug-20
Rhif y Llun/ Dwg No.	Adolygiad/ Revision	
IF186-8-1	P01	
Paratowyd gan/ Prepared by:	Gwiriwyd gan/ Checked by:	Cymeradwywyd gan/ Approved by:
DK	AP	TP

Print Date: 22/02/2022 11:00:31



© Hawlfraint y Goron [a hawliau cronfa ddata] 2019 OS LA100023458. Rhoddir trwyddedig ddirymadwy, anghyfyngedig a heb freindal i chi i weld y data trwyddedig at ddibenion arfasnawchol am y cyfnod y mae ar gael gan RCT. Ni cheich gopio, is-dwyddedu, dosbarthu na gwerthu unrhyw ran o'r data hwn i ddiwydd partion mewn unrhyw ffurf.

© Crown copyright [and database rights] 2019 OS LA100023458. You are permitted to use this data solely to enable you to respond to, or interact with, the organisation that provided you with the data. You are not permitted to copy, sub-licence, distribute or sell any of this data to third parties in any form.

KEY	
	PROPOSED EXPERIMENTAL PROHIBITION OF MOTOR VEHICLES AT BEGINNING AND END OF SCHOOL DAY WITH A 20MPH SPEED LIMIT
	PROPOSED EXPERIMENTAL 20 MPH SPEED LIMIT
	PROPOSED PROHIBITION OF MOTOR VEHICLE SIGNAGE
	PROPOSED 20MPH SIGNAGE



RHONDDA CYNON TAF  
FFYNIANT, DATBLYGU, A  
GWASANAETHAU RHENG-FLAEN

RHONDDA CYNON TAF  
PROSPERITY, DEVELOPMENT AND  
FRONTLINE SERVICES

UNED RHEOLI TRAFFIG / TRAFFIC MANAGEMENT  
Ty Sardis/Sardis House, Heol Sardis/Sardis Road, Pontypridd, CF37 1DU  
Ffôn/Tel: 01443 425001 Ffacs/Fax: 01443 490414

Cleint/ Client  
**CBS Rhondda Cynon Taf | Rhondda Cynon Taf CBC**

Prosiect/ Project  
**Local Sustainable Transport Scheme**

Teitl y Llund / Dwg Title  
**YGG Llwyncelyn  
Proposed Experimental Prohibition of Motor  
Vehicles and 20 MPH Speed Limit**

Manylion Adolygiad/Revision Details		
Rhif y Prosiect/ Project No.	Graddfa/ Scale @ A3	Dyddiad/ Date
IF186-8	1:2,000	Aug-20
Rhif y Llund/ Dwg No.	Adolygiad/ Revision	
IF186-8-1	P01	
Paratowyd gan/ Prepared by:	Gwiriwyd gan/ Checked by:	Cymeradwywyd gan/ Approved by:
DK	AP	TP