

Arwyddion arfaethedig ar gyfer dechrau'r terfyn cyflymder o 30mya.  
Proposed signage for start of 30mph speed limit.

See Insert A for Details along Heol Y Sarn

Arwyddion arfaethedig ar gyfer dechrau'r terfyn cyflymder o 20mya.  
Proposed signage for start of 20mph speed limit.

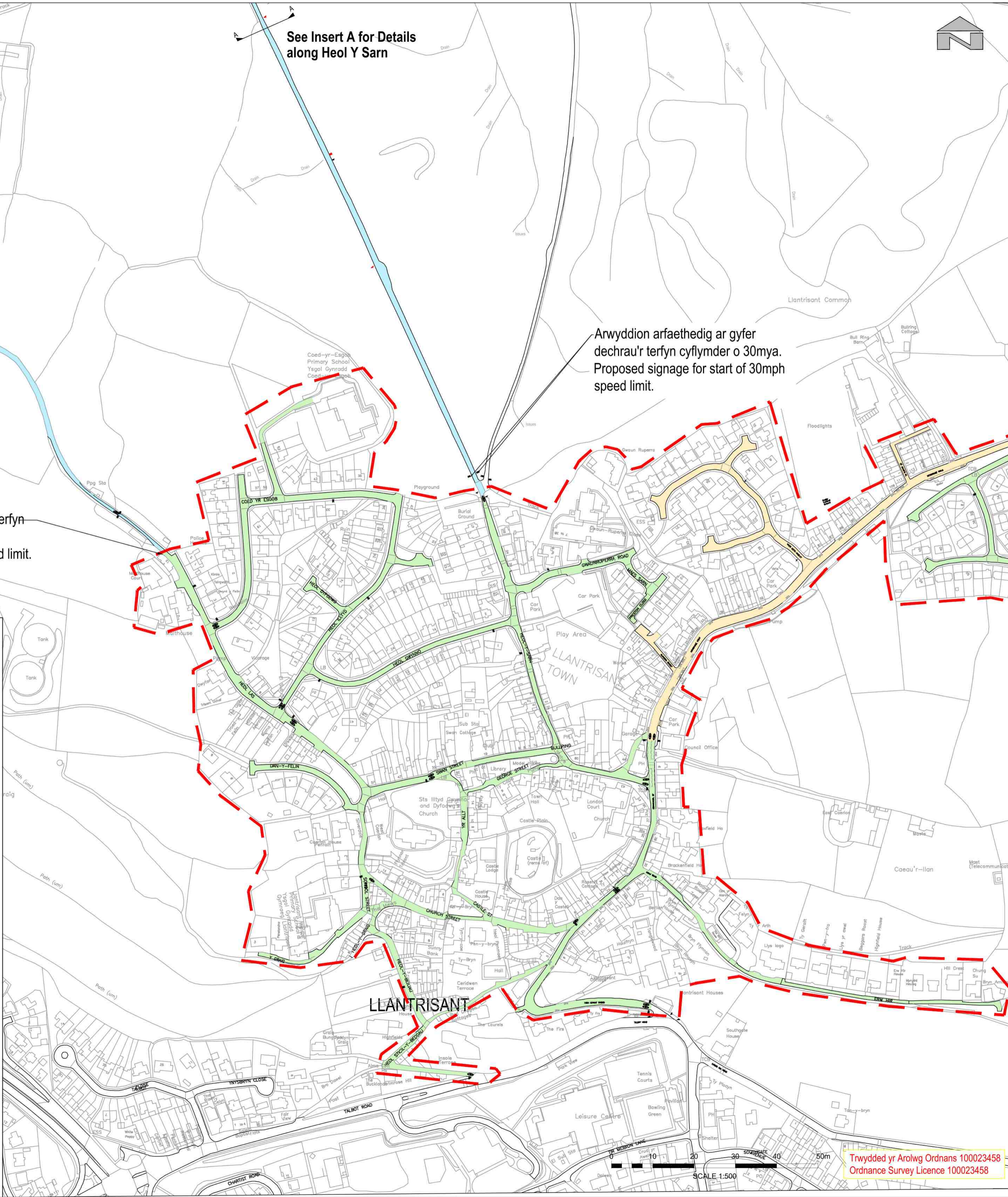
Arwyddion arfaethedig ar gyfer dechrau'r terfyn cyflymder o 30mya.  
Proposed signage for start of 30mph speed limit.

**Nodiadau/Notes**

- Cyfesurynnau grid Arolwg Ordnans am ganol y safle 305024E, 183686N. OS Grid Co-ordinates for centre of site 305024E, 183686N.
- Mae'r cynigion arafu traffig a ddangosir ar y llun yma yn seiliedig ar wybodaeth fapiau Arolwg Ordnans a ddarperir gan Drydydd Parti. Does dim modd i Capita roi unrhyw sicrwydd ynghylch cywirdeb y nodweddion presennol o fewn y cyfesurynnau. Dylid cynnal arolwg topograffig i bennu lled bresennol y ffordd a'r troedffordd. lleoliadau'r dodrefn stryd presennol, mynedfeydd dreif cwrw isel a.y.b, gan fod y ffactorau yma'n debygol o effeithio ar leoliad unrhyw nodweddion arafu traffig. The traffic calming proposals depicted on this drawing are based on Ordnance Survey mapping information provided by a Third Party. Capita can give no guarantee as to the accuracy of the existing features contained therein. A topographical survey should be undertaken to accurately determine the existing road and footway widths, locations of existing street furniture, drop-kerb driveway accesses etc. as these factors are likely to affect the positioning of any traffic calming features.

**Eglurhad/Legend**

	Ffin y cynllun. Scheme boundary.
	Parth cyflymder 20mya a chyfyngiadau - 7.5 tunnell ac eithrio mynediad. 20mph speed zone 7.5t Except for access.
	Terfyn cyflymder 20mya a chyfyngiadau - 7.5 tunnell ac eithrio mynediad. 20mph speed limit - 7.5t Except for access.
	Maint ardal y terfyn cyflymder 30 mya - 7.5 tunnell ac eithrio mynediad. Extent of 30mph speed limit - 7.5t Except for access.



Adolygu Rev	Tynwyd Dim Gwilydd	Cymeradwydd Cychod	Disgrifiad	Dyddiad

Pwrpas cyhoeddi | Purpose of Issue  
**S2 - Addas ar gyfer gwilyddiaeth**  
**S2 - Suitable for information**

Dosbarth | Classification  
**Ymgynghoriad Cyhoeddus**  
**Public Consultation**

Cleient | Client

Prosiect | Project  
**B495 Newbridge Road, Llantrisant**  
**Llywbrau Diogel mewn Cymunedau**  
**Safe Routes in the Communities**

Llun | Drawing  
**Ymgynghoriad Cyhoeddus**  
**Public Consultation**

Graddfa @ A1	Tynwyd Draw	Gwirwyd Checked	Cymeradwydd Approved
Scale @ A1 1:500	EM	AJ	

Rhif y prosiect | Project No.  
GC3160

Dyddiad | Date  
7th January 2021

Adnabyddwr y llun | Drawing Identifier  
RCT-CONSULT-02

adolygu | revision  
P08

St David's House, Pascal Close, St Mellons, Cardiff, CF3 0LW  
[www.redstartwales.com](http://www.redstartwales.com)