



**Have your
Say**



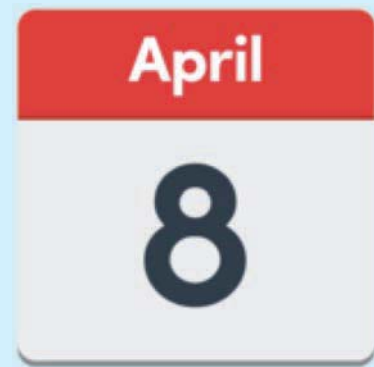
**Modernising
Day Care
Services
for Older
People**



Starts



Ends



Visit

www.rctcbc.gov.uk/consultation
for more information



Call: 01443 425014



Email: consultation@rctcbc.gov.uk



Freepost RSBU-HJUK-LSSS
Research & Consultation
Public Relations & Strategy
The Pavilions
Cambrian Industrial Park
Clydach Vale
Tonypandy
CF40 2XX



RCTCBC has agreed to a 12 week consultation on Day Care Services for Older People



RCT County Borough Council developed a strategy to modernise accommodation options for older people and deliver extra care housing to:-



Increase the options available for people needing accommodation with care and support.



Deliver an alternative for those who are able to continue to live independently but with support.



Since September 2017 RCT County Borough Council has agreed a plan to fund extra care beds across the county which will cost about £50,000,000 to meet the needs of older people



RCT County Borough Council will provide high quality modern homes and use assistive technology and telecare options for people to remain as independent as possible.



The Extra Care Housing Scheme will also create and provide community hubs, facilities and services in flexible spaces including day services for older people



Where are we now?



Current day services operate at day centre settings across Rhondda Cynon Taff.



Tonyrefail, Trecynon, Riverside have 25 places available each day



25

Bronllwyn (Gelli)
25 places available each day at
Bronllwyn Residential Home



11

Ferndale
11 places available each day at
Ferndale Residential Home



60%

Over the last 5 years the
number of people using these
centres has dropped by 60%



75%

Day centres are open 5 days a
week from 9 am until 4pm but
are mostly used from
10.30am - 3.30pm
That means they are only used
75% of the day



What RCT County Borough Council think and believe.....



that in the future there will be even less people using day centres than there are now



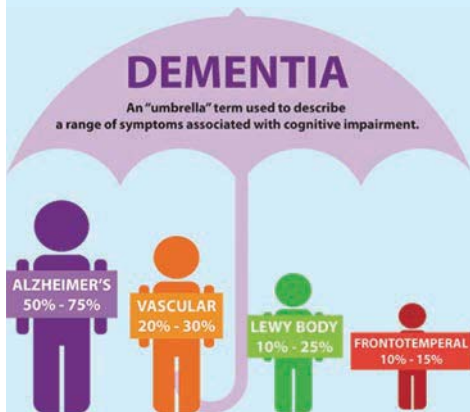
But we still believe that day centres are important for older people



Proposed New Service Model



Provide Modern Day Services that meet the changing needs and wishes of older people across Rhondda Cynon Taf.



Provide a specialist service for those with complex needs



The Council will provide an assessment for each person currently receiving day services



Close current Council day services that are based within residential homes



Other Option



Continue with what is already there and do nothing.



Questions



Why now?

The Council has a duty to look at what they have now and think about what people want and need now and in the future and they need to be able to meet peoples changing needs.



Will I be able to use other day centres?

Your new assessment will look at your needs and help you to choose other options



Will transport be provided?

Any transport needs will be looked at during your assessment



What Happens Next?

People who are currently using day services and their Carers are being asked what they think before the Council make any decisions



Please tell us what you think by completing the questionnaire and sending it back by **8th April 2019**

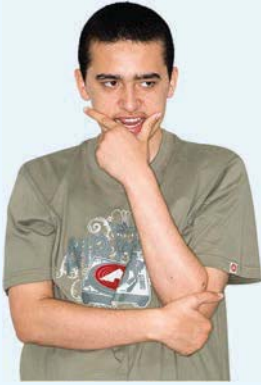
2

Page 2 of this document tells you how to do this

Info



If you want to know more about how the council will use your information you can contact them using the information given on page 2



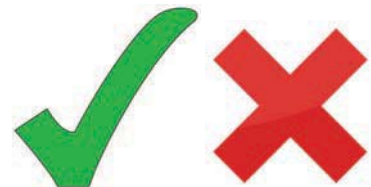
About you



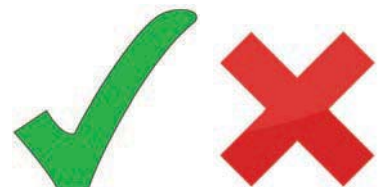
Do you use day centres?

Are you a relative, partner or friend of someone who uses a day centre?

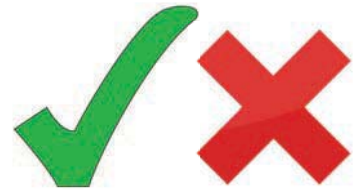
 

An advocate for a day centre user?



A member of the public

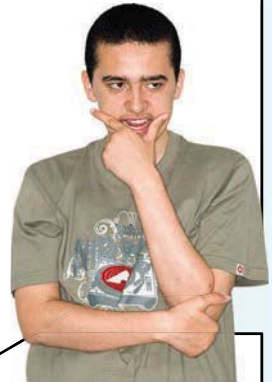
Staff member

Other
Please tell us who you are



Do your views
relate to
any day care
centres?



Trecynon Day Centre
Aberdare



Riverside Day Centre -
Pontypridd



Bronllwyn, Gelli



Ferndale House



Tonyrefail Day centre





Proposed new Service Model



Provide Modern Day Services that meet the changing needs and wishes of older people across Rhondda Cynon Taf?

Please tell us why you do not agree



How will this affect you and your family?



A large, empty, rounded rectangular box with a black border, intended for writing a response to the question above.



Other options.



Keep what is already
there and do nothing

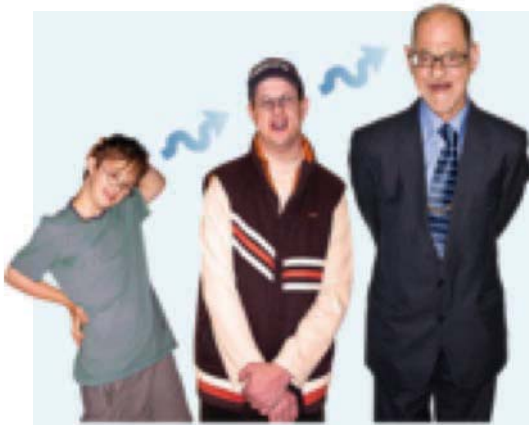
Please tell us why ?



Any other comments?
Please tell us.



Gender



Age



Postcode



The Equalities Act says that the Council has a legal duty to look at how decisions affect people because of their



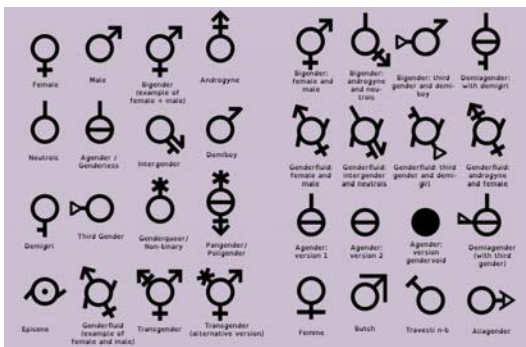
Gender



Age, please tell us



Ethnicity, please tell us



Sexuality, please tell us



Religion/belief, please tell us



Gender Identity, please tell us



Relationships Status, please tell us



Pregnancy, please tell us



Preferred Language, please tell us



The Welsh Language Measure says that the Council has a duty to look at how decisions affect you because you speak Welsh



Please tell us how these changes will affect opportunities for you to use the Welsh Language



What would be good about the changes for you?



What is not good about the changes for you?



Are you happy for us to contact you to discuss this further?



Name



Email



Telephone number



Postcode



Thank you for telling us what you think. Please follow instructions on page 2 to send us your thoughts

