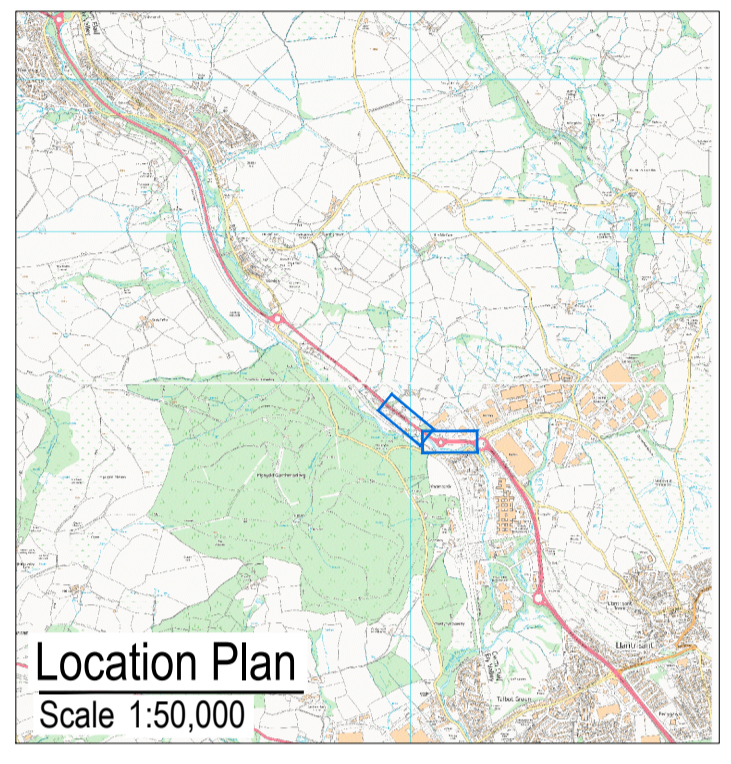


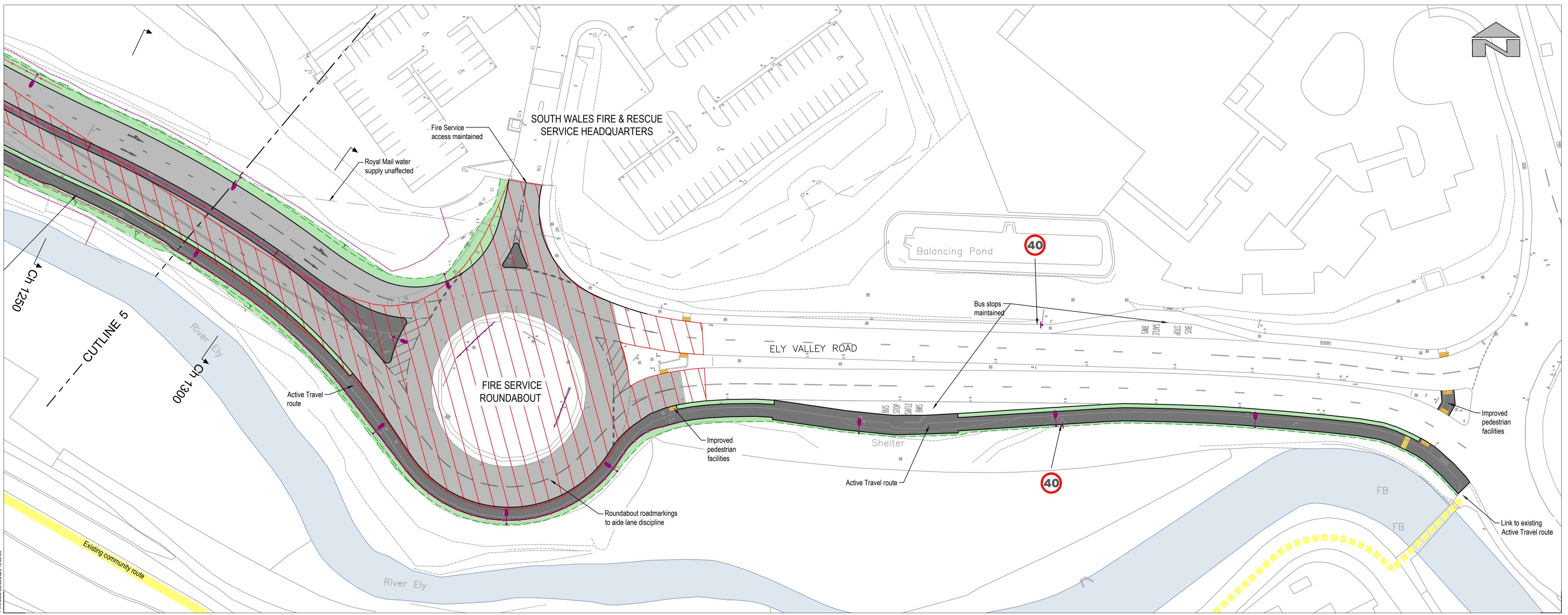
Key

- Existing road alignment
- New road
- New footway / track / field access
- Unbound gravel access routes
- New/revived verge and embankment
- Ecological mitigation planting
- Existing vegetation to remain
- Highway VRS
- Highway boundary fence
- Ecological mitigation fencing



© Hawfrant y Goron (a hawliau / gornfa ddata) 2019 OS LA100023458. Mae hysbysu gwybodaeth hon yn parhysu'r data yma dim ond at ddiweddian ymateb i'r awdurdod sy'n hysbysu'r data i chi, neu at ddibenion cynhyrchu agall. Dim hysbysu gwybodaeth hon yn ddiwyddedd i'r data yma ar ran trydydd partiwr, neu i ddarparu neu i werthu iddyn nhw.

© Crown copyright (and database rights) 2019 OS LA100023458. You are permitted to use this data solely to enable you to respond to, or interact with, the organisation that provided you with the data. You are not permitted to copy, sub-licence, distribute or sell any of this data to third parties in any form.



Highway fence line connected Ch.1010 to 1100 RHS to reflect agreed DCWW land boundary. Street lighting on Active Travel Route removed Ch.160 - 860 to reflect Client Scope change.	JS	26/05/2020	P01
Client/Client		Gen/Gen	Dyddiad/Date
Rhondda Cynon Taf County Borough Council			Adolygiad/Revision
Project/Project			
A4119 Coedely Dualling			
Title y Lloer Dwg Title			
Preliminary Design General Arrangement (Sheet 3 of 3)			
Rif y Proiect/Project No.	Graddfa/Scale @ A1	Dyddiad/Date	
P048	1:500	May '20	
Rif y Lloer Dwg No.	Adolygiad/Revision		
P048-SH-80-04	P01		
Paratowyd gan/Prepared by:	Gwirwyd gan/Checked by:	Cymerwyd gan/Approved by:	
JS	NM	NM	

RHONDDA CYNON TAF
FFYNNANT, DATBLYGU A GWASANAETHAU RHENG-FLAEN
RHONDDA CYNON TAF PROSPERITY, DEVELOPMENT AND FRONTLINE SERVICES

RHONDDA CYNON TAF
PROSPECTAU STRATEGOL/ STRATEGIC PROJECTS
Ty Sardin/Sardin House, Heol Sardin/Sardin Road, Pontypriod, CF37 1DU
Ffôn/Tel: 01443 425001 Ffacs/Fax: 01443 490414