



Tylorstown Landslide
Environmental Impact Assessment
Volume 3 - Appendices
Series 7 Cultural Heritage
December 2021



Appendix 7.1

Aerial Photographs

The following is a list of the aerial photographs with coverage of the Study Area held by the Central Registry of Air Photography for Wales (CRAPW). The images largely followed the chronology of historic maps.

WO no	Sortie No	Date	Ph type
5132	RAF 3G/TUD/T19 Part II	03/08/45	B&W
3199	CPE/UK/2081	19/05/47	B&W
4195	CPE/UK/1997	13/04/47	B&W
3299	RAF 540/525	05/06/51	B&W
3300	RAF 540/525	05/06/51	B&W
4300	RAF 540/525	05/06/51	B&W
5419	F22 58/RAF/1421	22/04/54	B&W
0131	F22 58/RAF/1421	22/04/54	B&W
0130	F21 58/RAF/3506	21/04/60	B&W
061	OS 63/054	17/05/63	B&W
9 295	FSL/6764	27/03/68	B&W
034	OS/79/129	22/09/79	B&W
029	ADAS/170	1983	B&W
195	ADAS/208	1984	B&W
083	JAS/0985	28/04/85	Colour
040	Geonex/7991	1991	Colour
053	OS/93/260	30/06/93	Colour
143	CUCAP/Z-NC	28/05/97	B&W



Appendix 7.2

Apportionments relating to the Tithe Map of the Parish of Llanwonno in the County of Glamorgan 1842.

Parcel Number	Landowners	Occupiers	Name and Description of Lands and Premises	State of Cultivation	Quantities in Statute Measure			Amount of Rent- charge apportioned upon the several Lands, and to whom payable					
					A.	P.	R.	Payable to Vicar		Payable to Appropriator			
						£	S	£	S	£	S	£	S
32	Homfray John Esq.	Thomas Evan	Pendyris Isha Graig Fawr	Wood	35	1	9	-	-	-	-	-	-
33	Homfray John Esq.	Thomas Evan	Pendyris Isha Cae Quarr	Pasture	1	2	24	-	-	-	-	-	-
34	Homfray John Esq.	Thomas Evan	Pendyris Isha Ochor Bach	Pasture	2	2	3	-	-	-	-	-	-
35	Homfray John Esq.	Thomas Evan	Pendyris Isha Cae Ochor Mawr	Pasture	6	3	34	-	-	-	-	-	-
36	Homfray John Esq.	Thomas Evan	Pendyris Isha Tri Quarter	Meadow	3	1	10	-	-	-	-	-	-
41	Homfray John Esq.	Thomas Evan	Pendyris Isha Coed cae	Brake	78	2	31	-	-	-	-	-	-
42	Homfray John Esq.	Thomas Evan	Pendyris Isha Cae Tilla	Pasture	2	2	25	-	-	-	-	-	-
43	Homfray John Esq.	Thomas Evan	Pendyris Isha Cae Pen Y Graig	Pasture	9	-	2	-	-	-	-	-	-
44	Homfray John Esq.	Thomas Evan	Pendyris Isha Cae Bach & Ty Isha	Arable	1	-	3	-	-	-	-	-	-
45	Homfray John Esq.	Thomas Evan	Pendyris Isha Cae Ty Isha	Arable	2	3	33	-	-	-	-	-	-
46	Homfray John Esq.	Thomas Evan	Pendyris Isha Waund Glandwr	Meadow, wood	3	-	16	-	-	-	-	-	-
47	Homfray John Esq.	Thomas Evan	Pendyris Isha	Pasture	1	3	25	-	-	-	-	-	-

			Pant Y Newbran										
48	Ann Saunderson	Thomas Thomas	Penheol Leche Craig Penheol	Pasture	70	3	30	-	-	-	-	-	-
49	Ann Saunderson	Thomas Thomas	Penheol Leche Pant y Newbron	Pasture	-	3	20	-	-	-	-	-	-
50	Ann Saunderson	Thomas Thomas	Penheol Leche Cae Rhiw	Pasture	2	1	4	-	-	-	-	-	-
51	Ann Saunderson	Thomas Thomas	Penheol Leche Haen Coedcae	Pasture	32	2	7	-	-	-	-	-	-
52	Ann Saunderson	Thomas Thomas	Penheol Leche Garden	Pasture	-	-	30	-	-	-	-	-	-
53	Ann Saunderson	Thomas Thomas	Penheol Leche Hendre	Pasture	3	3	0	-	-	-	-	-	-
54	Ann Saunderson	Thomas Thomas	Penheol Leche Waen penheol	Pasture	10	3	20	-	-	-	-	-	-
55	Ann Saunderson	Thomas Thomas	Penheol Leche Cae ty Llwyn	Pasture	3	-	-	-	-	-	-	-	-
56	Ann Saunderson	Thomas Thomas	Penheol Leche Coedcae bach	Pasture	3	1	-	-	-	-	-	-	-
57	Ann Saunderson	Thomas Thomas	Penheol Leche Waen arw isha	Meadow	10	1	28	-	-	-	-	-	-
58	Ann Saunderson	Thomas Thomas	Penheol Leche Cae Pen y Coed Cae	Pasture	2	3	2	-	-	-	-	-	-
59	Ann Saunderson	Thomas Thomas	Penheol Leche Hendre	Meadow	8	-	10	-	-	-	-	-	-
71	Ann Saunderson	Thomas Thomas	Penheol Leche Mynydd Tir Bach	Pasture	46	-	32	-	-	-	-	-	-



72	Homfray John Esq	David Evan	Cefn Lleche ucha Mynydd	Pasture	41	-	-	-	-	-	-	-	-
----	---------------------	---------------	-------------------------------	---------	----	---	---	---	---	---	---	---	---

Note. Quantities and Measures are listed in Acres, Roods and Perches (A.R.P.). An acre is 4,840 square yards. A rood is a rectangular Area one furlong (10 chains or 40 rods/perches) long by one rod wide. There are 40 perches to a rood, and 160 perches to an acre. The amount (£) due is listed in Pounds, Shillings and Pence (£sd).



Appendix 7.3

Plates

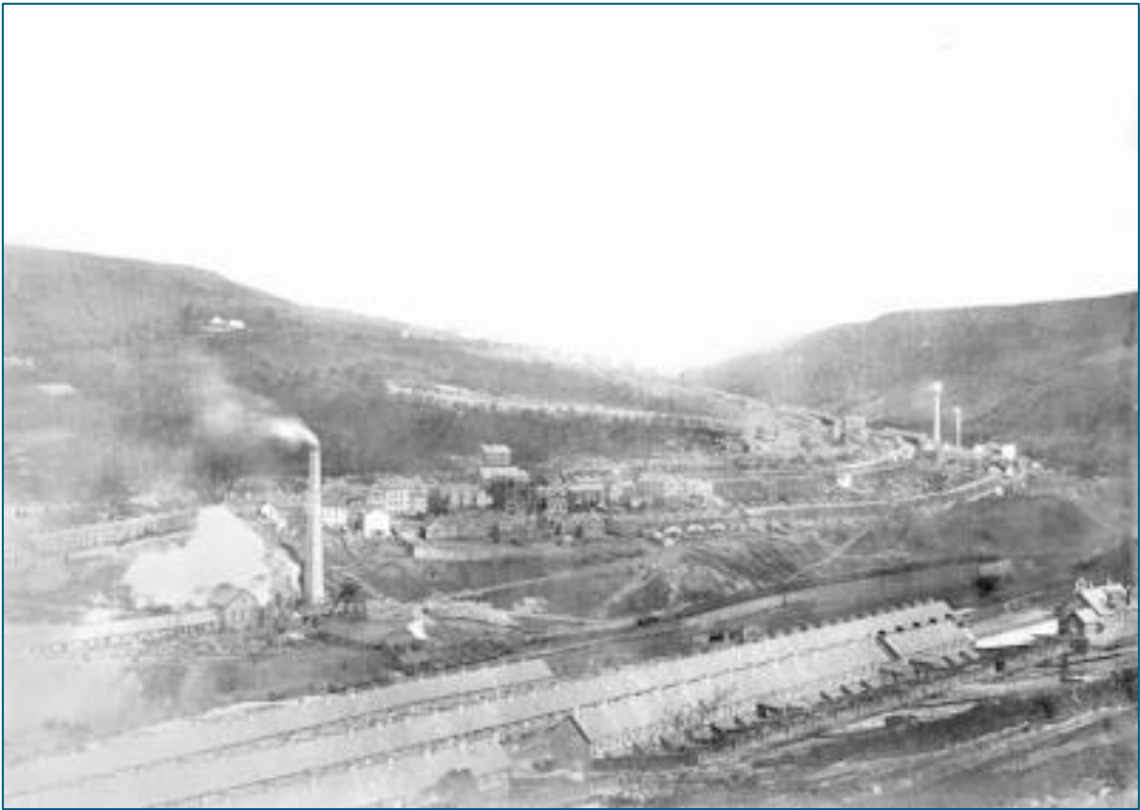


Plate 1. Tylorstown Colliery, c1900. © Reproduced by kind permission of Rhondda Cynon Taf Libraries



Plate 2. Tylorstown c. 1900 Showing early tips. © Reproduced by kind permission of Rhondda Cynon Taf Libraries

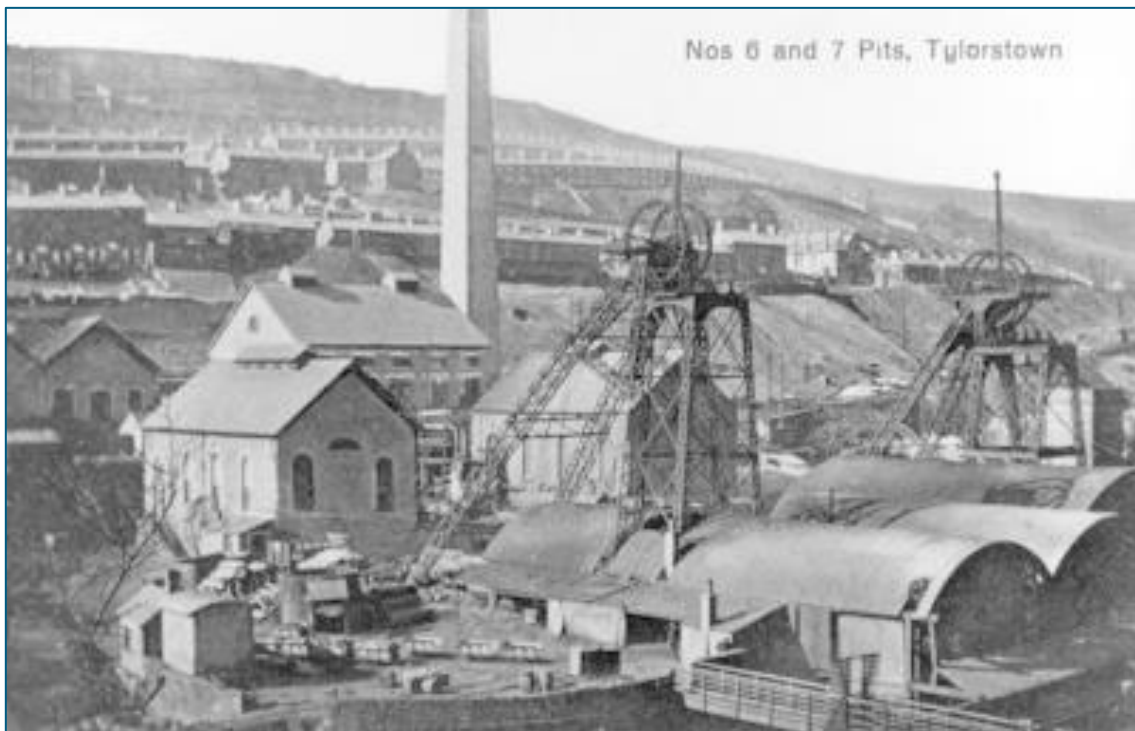


Plate 3. Tylorstown c. 1920. © Reproduced by kind permission of Rhondda Cynon Taf Libraries



Plate 4. Tylorstown Colliery, c. 1968. © Reproduced by kind permission of Rhondda Cynon Taf Libraries



*Plate 5. 1945 aerial photograph showing the Tylor's Newydd Tips (GGAT078789m) site.
©CRAPW*



Plate 6. 1947 aerial photograph showing the Tylor's Newydd Tips (GGAT078789m) site overlying the earlier historic agricultural landscape. ©CRAPW



Plate 7. This 1954 aerial photograph really highlights the huge extent of tip material along the valley bottom. ©CRAPW



Plate 8. 1968 aerial photograph showing pit features in the vicinity of the proposed Receptor Site suggestive of early mining exploration. © CRAPW



Plate 9. 1979 aerial photograph showing that RH02 'Old Smokey' (TT05) has been landscaped following the closure of the colliery in 1960. © CRAPW



Plate 10. 1991 aerial photograph shows that Tramway(TT03) has by this time been diverted from the Tylor's Newydd Tips site (GGAT07879m) to the Blaenllechau Road via a N/S aligned track. © CRAPW



Plate 11. SW facing view of RH01 Tylorstown Upper Tip (TT01).



Plate 12. SW facing view of RH01 Tylorstown Upper Tip (TT01) (centre left) with RH01 Tylorstown Lower Tip (TT02) in the distance (centre middle).



Plate 13. SE facing view of RH01 Tylorstown Upper Tip (TT01) looking towards the development area and showing damage caused by landslide. Tramway (TT03) can be seen in the centre distance.



Plate 14. E facing view from Tramway (TT03) towards RH02 'Old Smokey' Tip (TT05).



Plate 15. E facing view of Tramway (TT03) showing RH02 'Old Smokey' Tip (TT05) from further down the track.



Plate 16. West facing view from Tramway (TT03) towards RH01 Tylorstown Lower Tip (TT02) and HLCA020 'Blaenllechau & Ferndale' in the distance.



Plate 17. West facing view from Tramway (TT03) towards RH01 Tylorstown Lower Tip (TT02) and HLCA020 'Blaenllechau & Ferndale' in the distance from further down the track.



Plate 18. WNW view from Tramway (TT03) towards HLCA020 Blaenllechau and Ferndale.



Plate 19. W facing view from Tramway (TT03) towards HLCA019 'Pontygwaith, Tylorstown and Stanleytown', showing 'Welfare Hall' (LB18284) in centre left, and HLCA024 'Rhondda Fach Western Enclosed Valley Sides'.



Plate 20. SW facing view of from Tramway (TT03) towards HLCA019 'Pontygwaith, Tylorstown and Stanleytown' and 'Welfare Hall' (LB18284) in centre right.



Plate 21. General S facing view of relict section of Tramway (TT03) highlighting surviving earthworks.



Plate 22. E facing view of relict section of Tramway (TT03) towards Tramway Winding Engine House (TT04) in centre distance.



Plate 23. W facing view of relict section of Tramway (TT03) looking away from Tramway Winding Engine House (TT04).



Plate 24. W facing view of relict section of Tramway (TT03) from current site entrance track.



Plate 25. E facing view of Receptor site location from E terminal end of relict section of Tramway (TT03).



Plate 26. E facing view of Tramway Winding Engine House (TT04).



Plate 27. E facing view of Tramway Winding Engine House (TT04) showing detail of standing masonry fabric.



Plate 28. SE facing view of RH02 'Old Smokey' Tip (TT05).



Plate 29. E facing view showing RH02 'Old Smokey' Tip (TT05) to the right with the proposed Receptor Site to the left.



Plate 30. NE facing view of Tramway (TT06) and the Tylors Newydd Tip site (GGAT07879m) from Tylorstown.



Plate 31. S facing view of Tramway (TT06) showing incline.



Plate 32. SW facing view of Tramway (TT06) towards Tylorstown and Stanleytown.



Plate 33. NE facing view of Tramway (TT06) towards Tramway Winding Engine House (TT07).



Plate 34. NW facing view from Tramway (TT06) towards Tramway (TT03) and RH01 Tylorstown Upper and Lower Tips (TT01 and TT02). Showing the character of HLCA023 'Rhondda Fach Eastern Enclosed Valley Sides'.



Plate 35. SE facing view of Tramway Winding Engine House (TT07) showing Receptor Site in distance.



Plate 36. NE facing view of Tramway Winding Engine House (TT07) from intersection of Tramway (TT03) and Tramway (TT06).



Plate 37. SE facing detailed view showing remaining standing fabric of Tramway Winding Engine House (TT07).



Plate 38. SE facing view of Structure (Location of) (TT09) towards Receptor Site.



Plate 39. W facing view of Structure (Location of) (TT09).



Plate 40. SE facing view of Track (TT10).



Plate 41. NW facing view of agricultural structure (TT17).



Plate 42. SW facing view from agricultural structure (TT17) towards the development area.

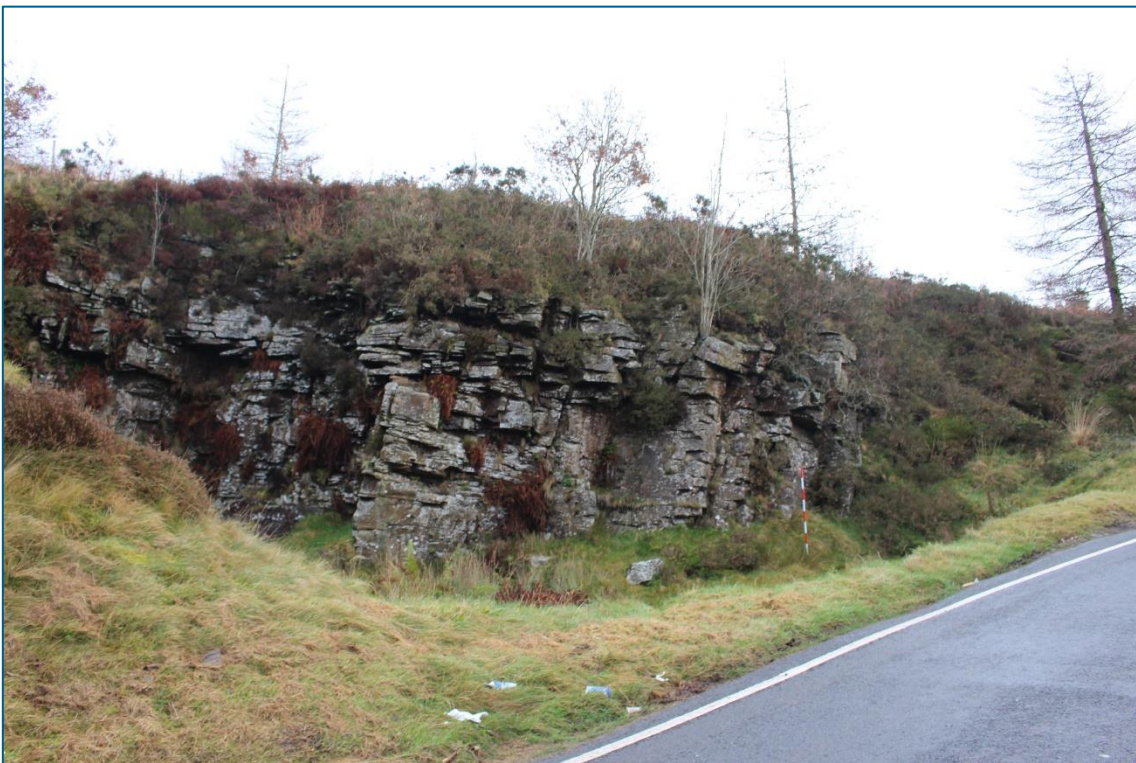


Plate 43. E facing view of Level (GGAT04096m) located on Blaenllechau Rd.



Plate 44. SE facing view from Level (GGAT04096m) towards the development area.



Plate 45. E facing view of dry stone wall field boundaries close to Tramway (TT03). Showing character of HLCA023 'Rhondda Fach Eastern Enclosed Valley Sides'.



Plate 46. N facing view of footpath leading from Tramway (TT03) to Blaenllechau Road. This track is included in the red line boundary. Showing character of HLCA023 'Rhondda Fach Eastern Enclosed Valley Sides'.



Plate 47. S facing view from current site entrance towards proposed Receptor Site location with RH02 'Old Smokey' Tip (TT05) in the centre right.



Plate 48. SE facing view towards proposed Receptor Site location from current transport route.



Plate 49. NW facing view across proposed Receptor Site showing the character of HLCA030 Rhondda Uplands.



Plate 50. W facing view from approximate SE end of proposed Receptor Site showing the character of HLCA030 Rhondda Uplands.



Plate 51. SE facing view from SE end of proposed Receptor Site towards Carn-y-Wiwer Cairnfield and Platform Houses (SAMGM323, NPRN307766, GGAT04575m, GGAT00581-2) showing character of HLCA030 Rhondda Uplands.



Plate 52. E facing view from HLCA019 'Pontygwaith, Tylorstown & Stanleytown towards RH01 Tylorstown Upper & Lower Tips (TT01 & TT02) showing landslide damage.



Plate 53. E facing view from HLCA019 Pontygwaith, Tylorstown & Stanleytown towards Tramway (TT03).



Plate 54. E facing view from HLCA019 Pontygwaith, Tylorstown & Stanleytown towards Tramway (TT03) RH02 'Old Smokey' Tip (TT05).



Plate 55. NE facing view from HLCA024 Rhondda Fach Western Enclosed Valley Sides towards RH01 Tylorstown Upper & Lower Tips (TT01 & TT02).



Plate 56. NE facing view from HLCA024 towards RH01 Tylorstown Upper & Lower Tips (TT01 & TT02), Tramway (TT03) and RH02 'Old Smokey' Tip (TT05).



Plate 57. E facing view from HLCA024 towards RH02 'Old Smokey' Tip (TT05) and Tramway (TT06). The proposed Receptor Site lies beyond the horizon.



Plate 58. NE facing view of Welfare Hall, Tylorstown (LB18284, NPRN414737)



Plate 59. N facing view from frontage of Welfare Hall (LB18284, NPRN414737) towards RH01 Tylorstown Upper & Lower Tips (TT01 & TT02). Here you can see the impact that the landslide damage has had on the setting of the town.



Plate 60. E facing view from adjacent to frontage of Welfare Hall (LB18284, NPRN414737) towards the development site which forms the backdrop of the Listed Building. The Receptor Site is located over the horizon.



Plate 61. NW facing view of Church of Our Lady Penrhys (LB17659, NPRN14064).



Plate 62. ESE facing view from Church of Our Lady Penrhys (LB17659, NPRN14064) towards the development area in the far distance.



Plate 63. E facing view of the Church of St Gwynno, Llanwonno (LB81029, GGAT00946m).



Plate 64. Grave of Guto Nyth Bran (LB81030) located in the churchyard of Church of St Gwynno (LB81029, GGAT00946m).



Plate 65. W facing view from Church of St Gwynno (LB81029, GGAT00946m) and Llanwonno Conservation Area (CA509) towards the development area showing no visibility.



Plate 66. Tylorstown Colliery, c1900. © Reproduced by kind permission of Rhondda Cynon Taf Libraries



Plate 67. Tylorstown c. 1900 Showing early tips. © Reproduced by kind permission of Rhondda Cynon Taf Libraries

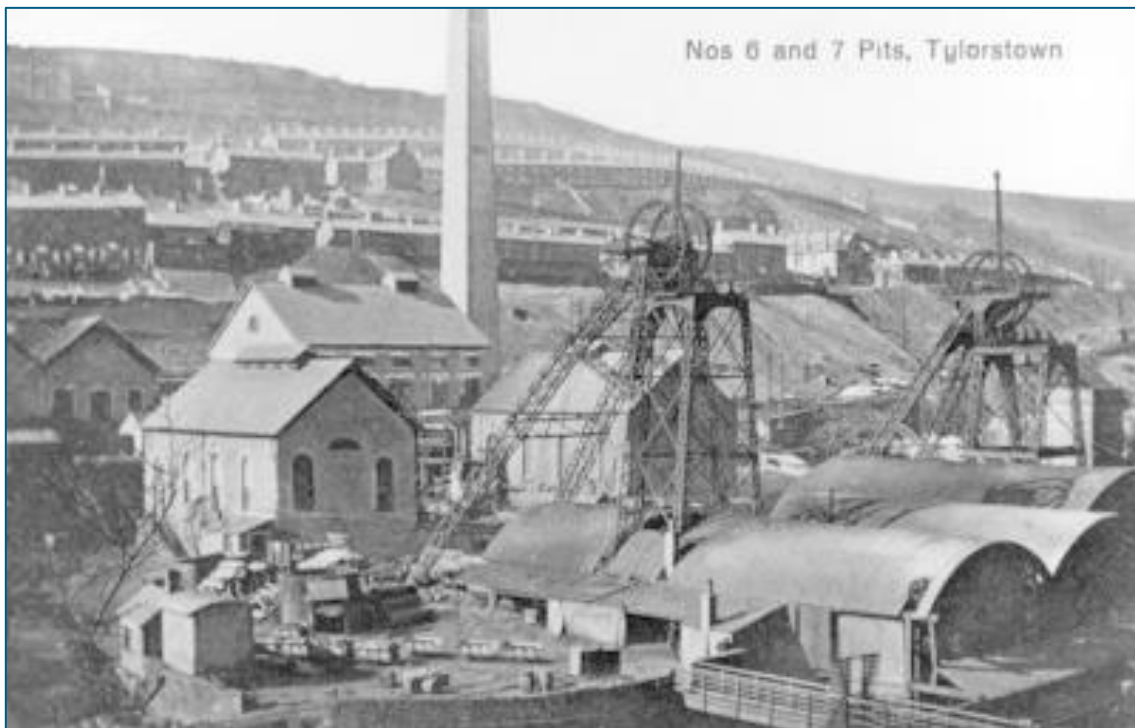


Plate 68. Tylorstown c. 1920. © Reproduced by kind permission of Rhondda Cynon Taf Libraries



Plate 69. Tylorstown Colliery, c.1968. © Reproduced by kind permission of Rhondda Cynon Taf Libraries



*Plate 70. 1945 aerial photograph showing the Tylor's Newydd Tips (GGAT078789m) site.
©CRAPW*



Plate 71. 1947 aerial photograph showing the Tylor's Newydd Tips (GGAT078789m) site overlying the earlier historic agricultural landscape. ©CRAPW



Plate 72. This 1954 aerial photograph really highlights the huge extent of tip material along the valley bottom. ©CRAPW



Plate 73. 1968 aerial photograph showing pit features in the vicinity of the proposed Receptor Site suggestive of early mining exploration. © CRAPW



Plate 74. 1979 aerial photograph showing that RH02 'Old Smokey' (TT05) has been landscaped following the closure of the colliery in 1960. © CRAPW



Plate 75. 1991 aerial photograph shows that Tramway(TT03) has by this time been diverted from the Tylor's Newydd Tips site (GGAT07879m) to the Blaenllechau Road via a N/S aligned track. © CRAPW



Plate 76. SW facing view of RH01 Tylorstown Upper Tip (TT01).



Plate 77. SW facing view of RH01 Tylorstown Upper Tip (TT01) (centre left) with RH01 Tylorstown Lower Tip (TT02) in the distance (centre middle).



Plate 78. SE facing view of RH01 Tylorstown Upper Tip (TT01) looking towards the development area and showing damage caused by landslide. Tramway (TT03) can be seen in the centre distance.



Plate 79. E facing view from Tramway (TT03) towards RH02 'Old Smokey' Tip (TT05).



Plate 80. E facing view of Tramway (TT03) showing RH02 'Old Smokey' Tip (TT05) from further down the track.



Plate 81. West facing view from Tramway (TT03) towards RH01 Tylorstown Lower Tip (TT02) and HLCA020 'Blaenllechau & Ferndale' in the distance.



Plate 82. West facing view from Tramway (TT03) towards RH01 Tylorstown Lower Tip (TT02) and HLCA020 'Blaenllechau & Ferndale' in the distance from further down the track.



Plate 83. WNW view from Tramway (TT03) towards HLCA020 Blaenllechau and Ferndale.



Plate 84. W facing view from Tramway (TT03) towards HLCA019 'Pontygwaith, Tylorstown and Stanleytown', showing 'Welfare Hall' (LB18284) in centre left, and HLCA024 'Rhondda Fach Western Enclosed Valley Sides'.



Plate 85. SW facing view of from Tramway (TT03) towards HLCA019 'Pontygwaith, Tylorstown and Stanleytown' and 'Welfare Hall' (LB18284) in centre right.



Plate 86. General S facing view of relict section of Tramway (TT03) highlighting surviving earthworks.



Plate 87. E facing view of relict section of Tramway (TT03) towards Tramway Winding Engine House (TT04) in centre distance.



Plate 88. W facing view of relict section of Tramway (TT03) looking away from Tramway Winding Engine House (TT04).



Plate 89. W facing view of relict section of Tramway (TT03) from current site entrance track.



Plate 90. E facing view of Receptor site location from E terminal end of relict section of Tramway (TT03).



Plate 91. E facing view of Tramway Winding Engine House (TT04).



Plate 92. E facing view of Tramway Winding Engine House (TT04) showing detail of standing masonry fabric.



Plate 93. SE facing view of RH02 'Old Smokey' Tip (TT05).



Plate 94. E facing view showing RH02 'Old Smokey' Tip (TT05) to the right with the proposed Receptor Site to the left.



Plate 95. NE facing view of Tramway (TT06) and the Tylors Newydd Tip site (GGAT07879m) from Tylorstown.

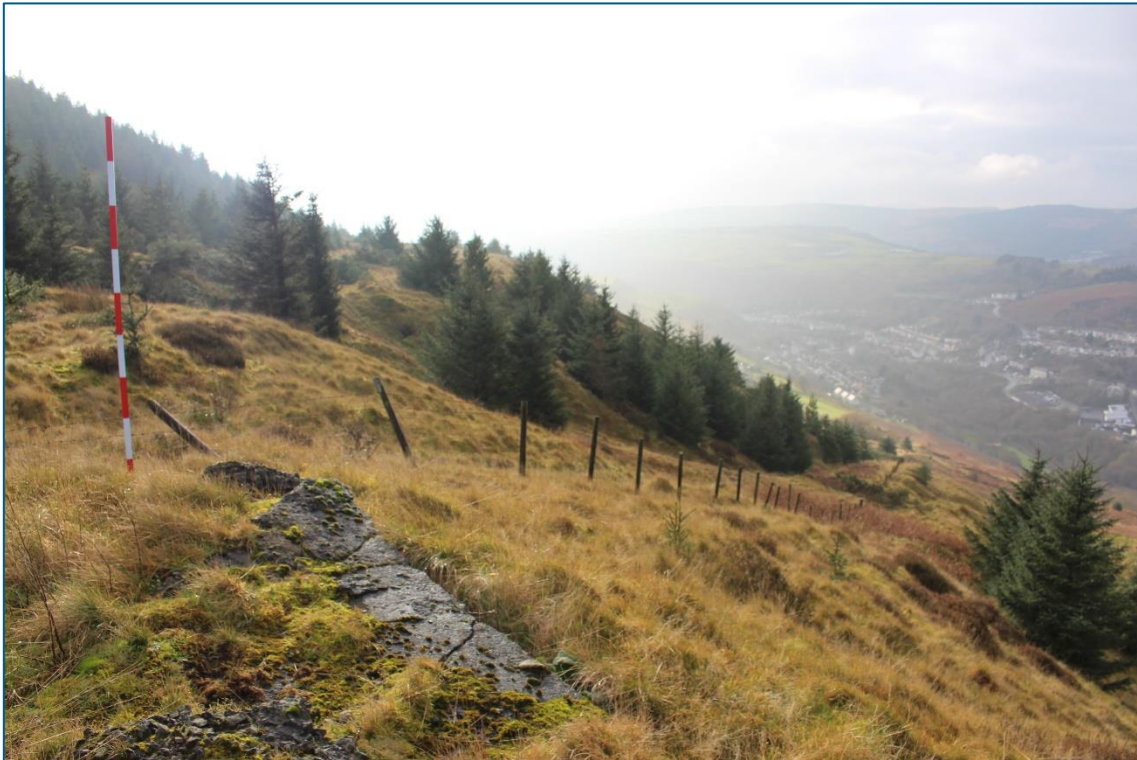


Plate 96. S facing view of Tramway (TT06) showing incline.



Plate 97. SW facing view of Tramway (TT06) towards Tylorstown and Stanleytown.



Plate 98. NE facing view of Tramway (TT06) towards Tramway Winding Engine House (TT07).



Plate 99. NW facing view from Tramway (TT06) towards Tramway (TT03) and RH01 Tylorstown Upper and Lower Tips (TT01 and TT02). Showing the character of HLCA023 'Rhondda Fach Eastern Enclosed Valley Sides'.



Plate 100. SE facing view of Tramway Winding Engine House (TT07) showing Receptor Site in distance.



Plate 101. NE facing view of Tramway Winding Engine House (TT07) from intersection of Tramway (TT03) and Tramway (TT06).



Plate 102. SE facing detailed view showing remaining standing fabric of Tramway Winding Engine House (TT07).



Plate 103. SE facing view of Structure (Location of) (TT09) towards Receptor Site.



Plate 104. W facing view of Structure (Location of) (TT09).



Plate 105. SE facing view of Track (TT10).



Plate 106. NW facing view of agricultural structure (TT17).



Plate 107. SW facing view from agricultural structure (TT17) towards the development area.

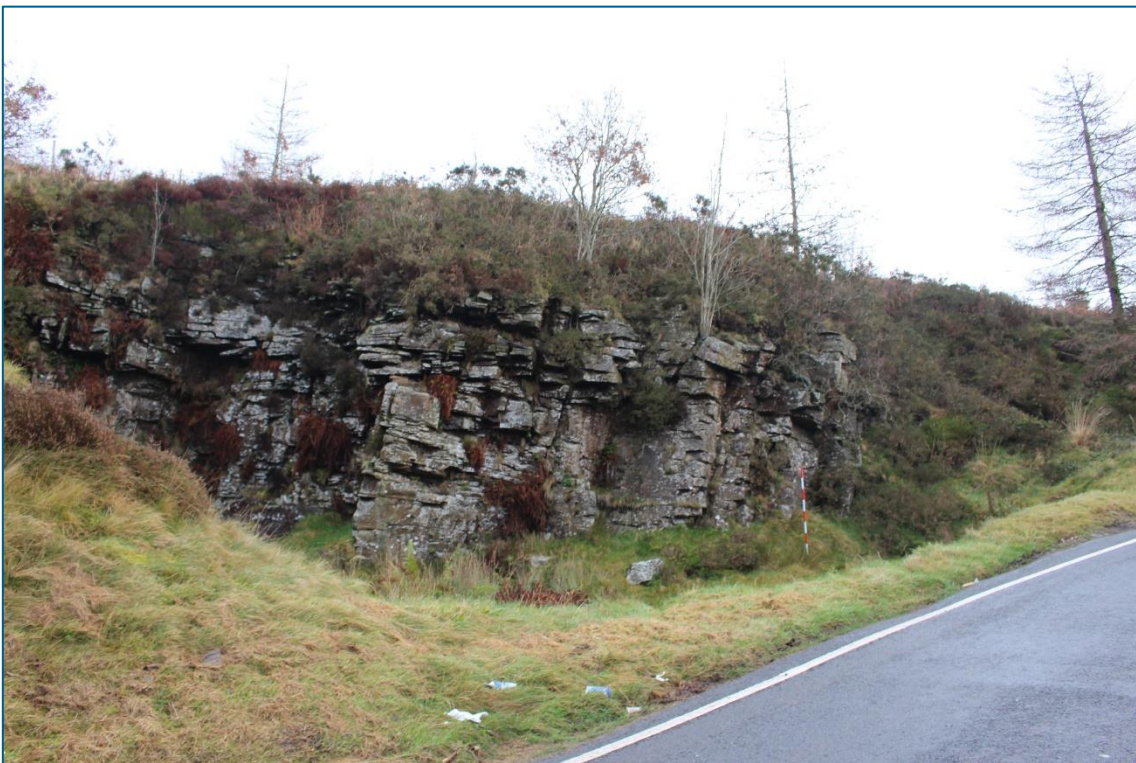


Plate 108. E facing view of Level (GGAT04096m) located on Blaenllechau Rd.



Plate 109. SE facing view from Level (GGAT04096m) towards the development area.



*Plate 110. E facing view of dry stone wall field boundaries close to Tramway (TT03).
Showing character of HLCA023 'Rhondda Fach Eastern Enclosed Valley Sides'.*



Plate 111. N facing view of footpath leading from Tramway (TT03) to Blaenllechau Road. This track is included in the red line boundary. Showing character of HLCA023 'Rhondda Fach Eastern Enclosed Valley Sides'.



Plate 112. S facing view from current site entrance towards proposed Receptor Site location with RH02 'Old Smokey' Tip (TT05) in the centre right.



Plate 113. SE facing view towards proposed Receptor Site location from current transport route.



Plate 114. NW facing view across proposed Receptor Site showing the character of HLCA030 Rhondda Uplands.



Plate 115. W facing view from approximate SE end of proposed Receptor Site showing the character of HLCA030 Rhondda Uplands.



Plate 116. SE facing view from SE end of proposed Receptor Site towards Carn-y-Wiwer Cairnfield and Platform Houses (SAMGM323, NPRN307766, GGAT04575m, GGAT00581-2) showing character of HLCA030 Rhondda Uplands.



Plate 117. E facing view from HLCA019 'Pontygwaith, Tylorstown & Stanleytown towards RH01 Tylorstown Upper & Lower Tips (TT01 & TT02) showing landslide damage.



Plate 118. E facing view from HLCA019 Pontygwaith, Tylorstown & Stanleytown towards Tramway (TT03).



Plate 119. E facing view from HLCA019 Pontygwaith, Tylorstown & Stanleytown towards Tramway (TT03) RH02 'Old Smokey' Tip (TT05).



Plate 120. NE facing view from HLCA024 Rhondda Fach Western Enclosed Valley Sides towards RH01 Tylorstown Upper & Lower Tips (TT01 & TT02).



Plate 121. NE facing view from HLCA024 towards RH01 Tylorstown Upper & Lower Tips (TT01 & TT02), Tramway (TT03) and RH02 'Old Smokey' Tip (TT05).



Plate 122. E facing view from HLCA024 towards RH02 'Old Smokey' Tip (TT05) and Tramway (TT06). The proposed Receptor Site lies beyond the horizon.



Plate 123. NE facing view of Welfare Hall, Tylorstown (LB18284, NPRN414737)



Plate 124. N facing view from frontage of Welfare Hall (LB18284, NPRN414737) towards RH01 Tylorstown Upper & Lower Tips (TT01 & TT02). Here you can see the impact that the landslide damage has had on the setting of the town.



Plate 125. E facing view from adjacent to frontage of Welfare Hall (LB18284, NPRN414737) towards the development site which forms the backdrop of the Listed Building. The Receptor Site is located over the horizon.



Plate 126. NW facing view of Church of Our Lady Penrhys (LB17659, NPRN14064).



Plate 127. ESE facing view from Church of Our Lady Penrhys (LB17659, NPRN14064) towards the development area in the far distance.



Plate 128. E facing view of the Church of St Gwynno, Llanwonno (LB81029, GGAT00946m).



Plate 129. Grave of Guto Nyth Bran (LB81030) located in the churchyard of Church of St Gwynno (LB81029, GGAT00946m).



Plate 130. W facing view from Church of St Gwynno (LB81029, GGAT00946m) and Llanwonno Conservation Area (CA509) towards the development area showing no visibility.